



Violet III

HOMES FROM
\$623,990

CLASSIC SERIES

KREYMER EAST

1007 SHELDON DRIVE, WYLIE, TX 75098

2,628
SQUARE FEET

4
BEDROOMS

3.5
BATHROOMS

2.5
CAR GARAGE



ELEVATION A



ELEVATION AS

ELEVATION AS



ELEVATION B

ELEVATION B



ELEVATION C

ELEVATION C



ELEVATION D

ELEVATION D





Violet III

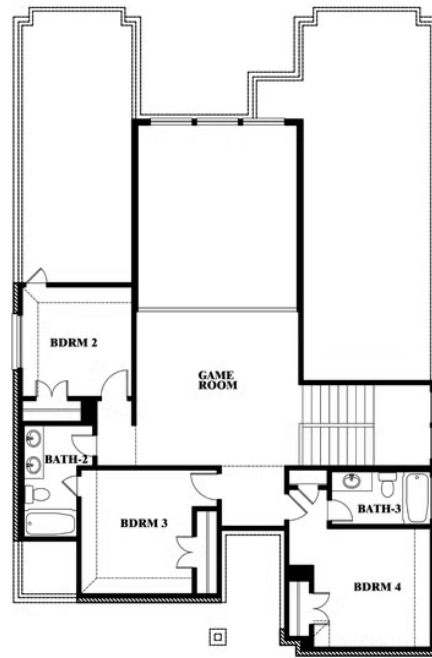
VIOLET III FLOOR PLAN

KREYMER EAST

1007 SHELDON DRIVE, WYLIE, TX 75098



Violet III



This brochure is for general informational purposes and is to be used as a guide only. Changes may be made during the development process and floorplans, dimensions, fixtures, fittings, finishes and specifications are subject to change without notice. Window placement, balcony configuration, wardrobe sizes and living areas may vary slightly within each plan type. EQUAL HOUSING OPPORTUNITY





Violet III

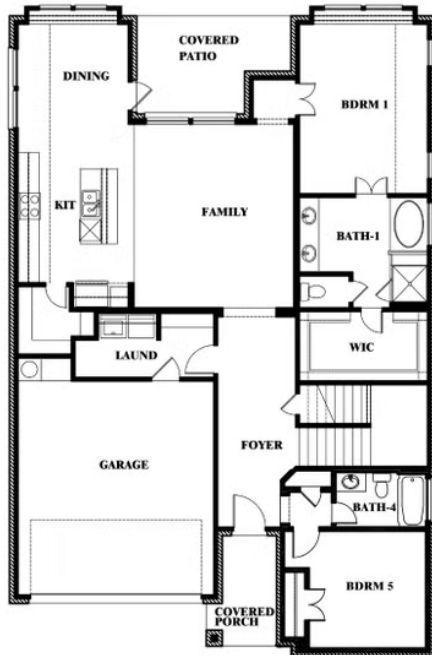
KREYMER EAST

1007 SHELDON DRIVE, WYLIE, TX 75098

VIOLET III FLOOR PLAN WITH BEDROOM AT STUDY



Violet III
Opt. Bed 5 & Bath 4 at Study



This brochure is for general informational purposes and is to be used as a guide only. Changes may be made during the development process and floorplans, dimensions, fixtures, fittings, finishes and specifications are subject to change without notice. Window placement, balcony configuration, wardrobe sizes and living areas may vary slightly within each plan type. EQUAL HOUSING OPPORTUNITY

