



Dewberry III

HOMES FROM
\$641,990

CLASSIC SERIES

KREYMER EAST

1007 SHELDON DRIVE, WYLIE, TX 75098

3,261
SQUARE FEET

5
BEDROOMS

3.5
BATHROOMS

2.5
CAR GARAGE





Dewberry III

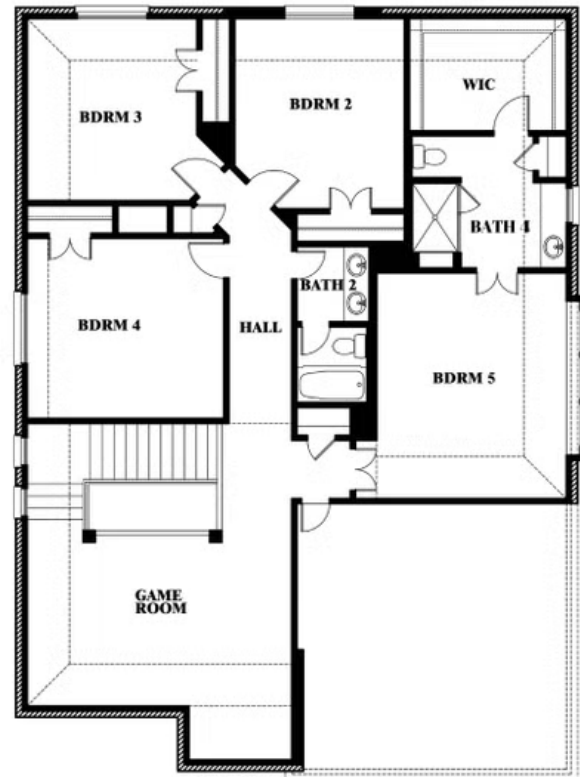
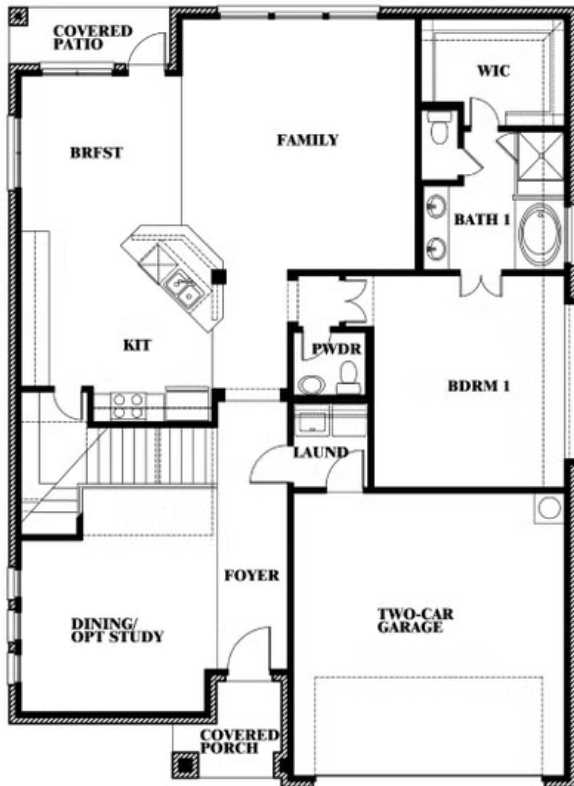
KREYMER EAST

1007 SHELDON DRIVE, WYLIE, TX 75098

DEWBERRY III FLOOR PLAN



Dewberry III



This brochure is for general informational purposes and is to be used as a guide only. Changes may be made during the development process and floor plans, dimensions, fixtures, fittings, finishes and specifications are subject to change without notice. Window placement, balcony configuration, wardrobe sizes and living areas may vary slightly within each plan type. EQUAL HOUSING OPPORTUNITY.

