



Hawthorne II

HOMES FROM
\$465,990

CLASSIC SERIES

THE RETREAT AT NORTH GROVE 60-70

1735 UPLAND ROAD, WAXAHACHIE, TX 75165

2,752
SQUARE FEET

4
BEDROOMS

3.0
BATHROOMS

2
CAR GARAGE

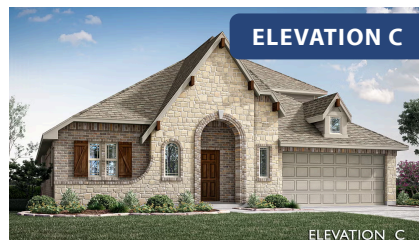


ELEVATION A



ELEVATION B

ELEVATION B



ELEVATION C

ELEVATION C



Document generated Mar 14, 2025. Prices, plans, square footage, features and materials are subject to change at any time without notice and vary among communities. Listed prices are for informational purposes only, are not binding, and do not create any contractual obligation(s). The price of any home is dependent on numerous factors, all of which are unique to a specific home, and is not guaranteed until specified in a binding contract. Pricing of elevations and additional optional beds/baths vary per plan. Some plans require a premium homesite. Please ask the Community Manager for details. Renderings of homes are artist concepts and may not reflect exact colors and materials.

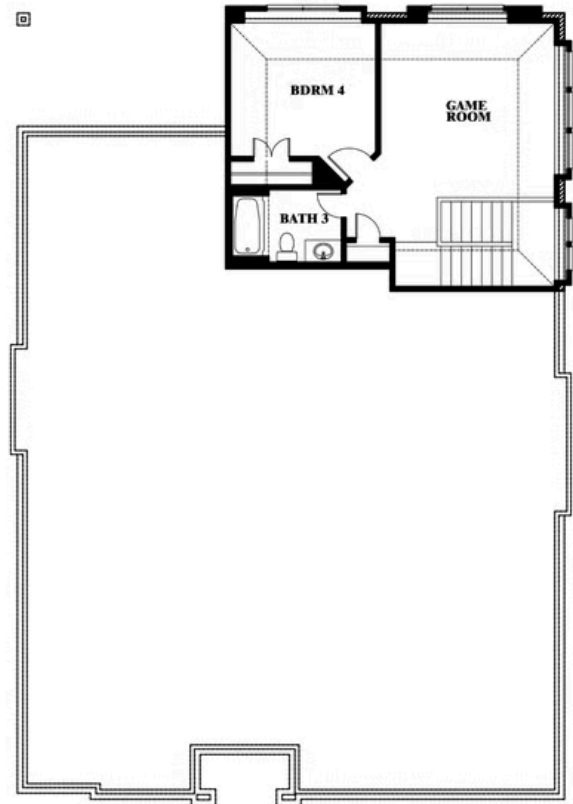
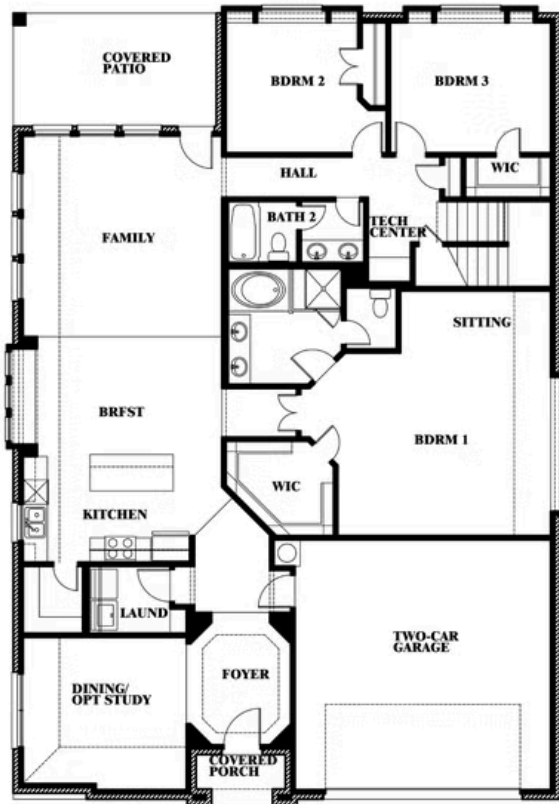


Hawthorne II

THE RETREAT AT NORTH GROVE 60-70
1735 UPLAND ROAD, WAXAHACHIE, TX 75165



Hawthorne II



This brochure is for general informational purposes and is to be used as a guide only. Changes may be made during the development process and floorplans, dimensions, fixtures, fittings, finishes and specifications are subject to change without notice. Window placement, balcony configuration, wardrobe sizes and living areas may vary slightly within each plan type. EQUAL HOUSING OPPORTUNITY



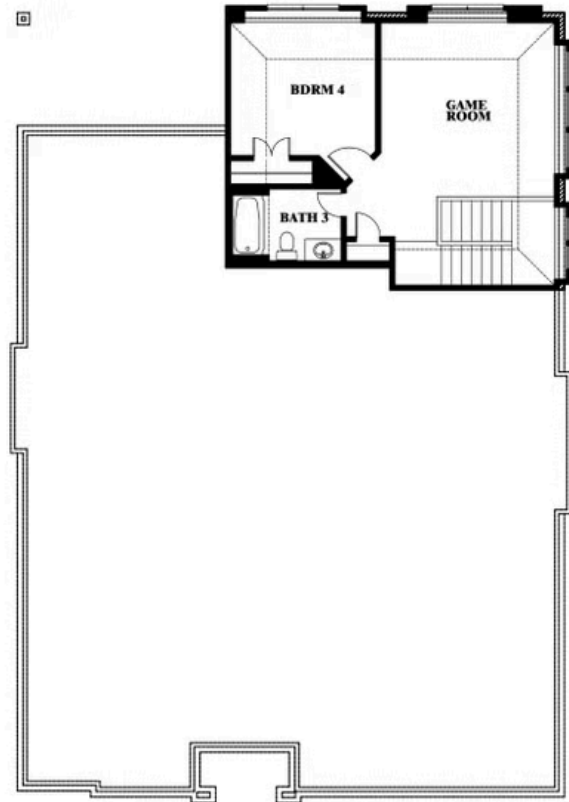
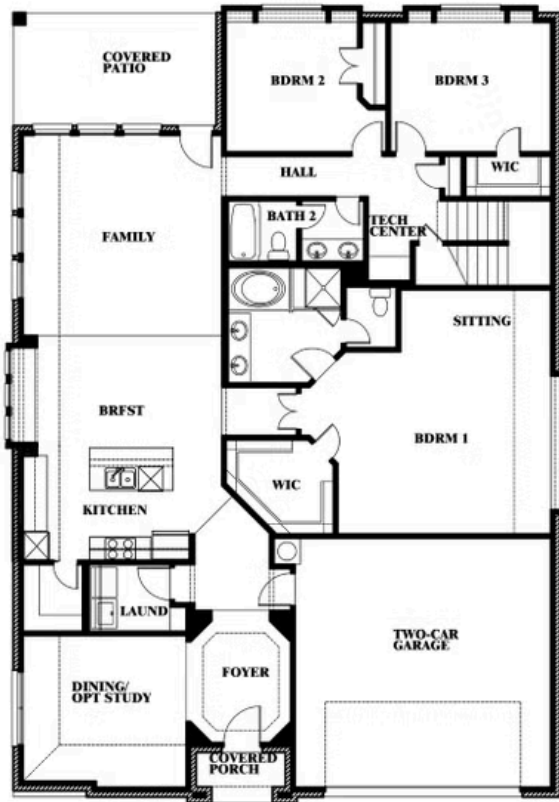


Hawthorne II

THE RETREAT AT NORTH GROVE 60-70
1735 UPLAND ROAD, WAXAHACHIE, TX 75165



Hawthorne II Opt. Deluxe Kitchen



This brochure is for general informational purposes and is to be used as a guide only. Changes may be made during the development process and floorplans, dimensions, fixtures, fittings, finishes and specifications are subject to change without notice. Window placement, balcony configuration, wardrobe sizes and living areas may vary slightly within each plan type. EQUAL HOUSING OPPORTUNITY

