

Violet IV

CLASSIC SERIES

STONE RIVER GLEN 50S

2113 RIO PIEDRA DRIVE, ROYSE CITY, TX 75189

HOMES FROM
\$456,990

2,838
SQUARE FEET

4
BEDROOMS

3.5
BATHROOMS

2
CAR GARAGE



ELEVATION A



ELEVATION AS

ELEVATION AS



ELEVATION B

ELEVATION B



ELEVATION C

ELEVATION C



ELEVATION D

ELEVATION D

Violet IV

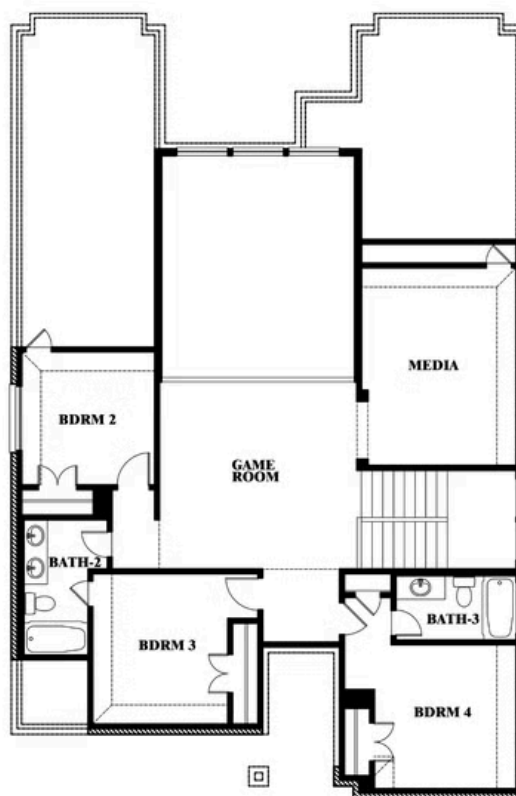
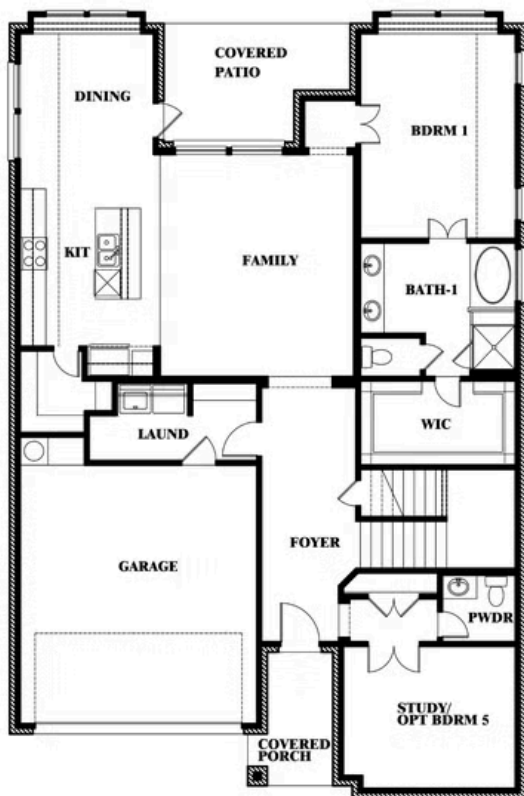
VIOLET IV FLOOR PLAN

STONE RIVER GLEN 50S

2113 RIO PIEDRA DRIVE, ROYSE CITY, TX 75189



Violet IV



This brochure is for general informational purposes and is to be used as a guide only. Changes may be made during the development process and floorplans, dimensions, fixtures, fittings, finishes and specifications are subject to change without notice. Window placement, balcony configuration, wardrobe sizes and living areas may vary slightly within each plan type. EQUAL HOUSING OPPORTUNITY

Violet IV

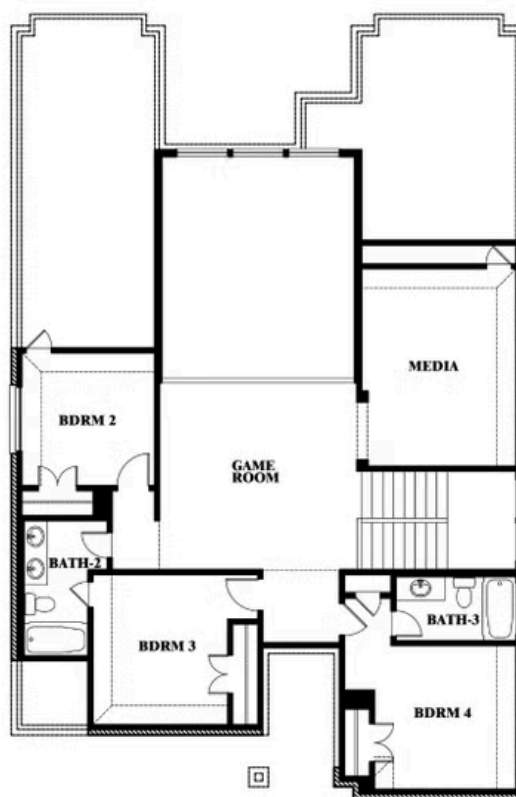
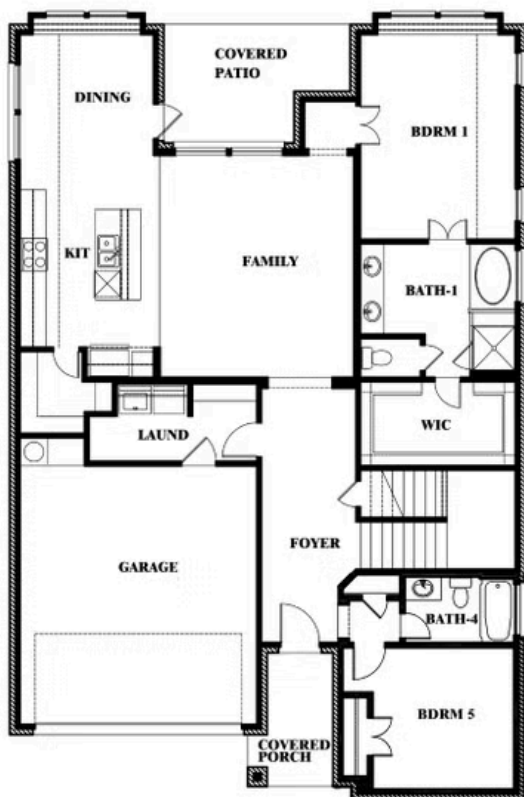
VIOLET IV FLOOR PLAN WITH OPTIONAL BEDROOM AT STUDY

STONE RIVER GLEN 50S

2113 RIO PIEDRA DRIVE, ROYSE CITY, TX 75189



Violet IV Opt. Bed 5 & Bath 4 at Study



This brochure is for general informational purposes and is to be used as a guide only. Changes may be made during the development process and floorplans, dimensions, fixtures, fittings, finishes and specifications are subject to change without notice. Window placement, balcony configuration, wardrobe sizes and living areas may vary slightly within each plan type. EQUAL HOUSING OPPORTUNITY