

Dogwood III

CLASSIC SERIES

STONE RIVER GLEN 50S

2204 RIO PIEDRA DRIVE, ROYSE CITY, TX 75189

HOMES FROM

\$438,990

2,333
SQUARE FEET

4
BEDROOMS

3.0
BATHROOMS

2
CAR GARAGE

ELEVATION C



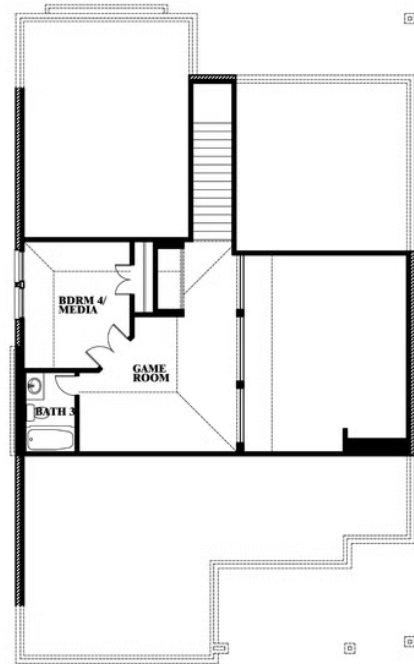
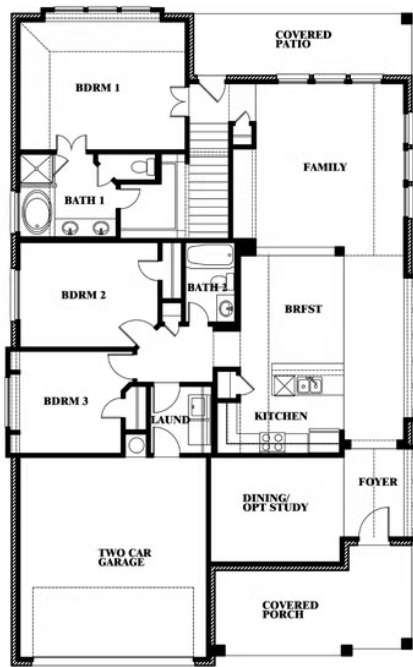
Dogwood III

STONE RIVER GLEN 50S

2204 RIO PIEDRA DRIVE, ROYSE CITY, TX 75189



Dogwood III



This brochure is for general informational purposes and is to be used as a guide only. Changes may be made during the development process and floorplans, dimensions, fixtures, fittings, finishes and specifications are subject to change without notice. Window placement, balcony configuration, wardrobe sizes and living areas may vary slightly within each plan type. EQUAL HOUSING OPPORTUNITY

