

Cypress II

CLASSIC SERIES

STONE RIVER GLEN 50S

2113 RIO PIEDRA DRIVE, ROYSE CITY, TX 75189

HOMES FROM

\$418,990

2,454
SQUARE FEET

4
BEDROOMS

3.0
BATHROOMS

2
CAR GARAGE

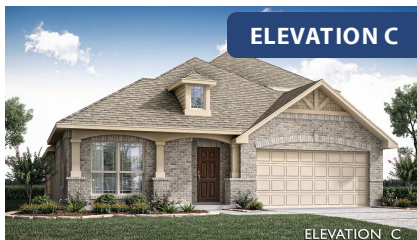


ELEVATION F



ELEVATION B

ELEVATION B



ELEVATION C

ELEVATION C



ELEVATION D

ELEVATION D



ELEVATION E

ELEVATION E



ELEVATION BS

ELEVATION BS



ELEVATION CS

ELEVATION CS



ELEVATION FS

ELEVATION FS



Document generated Nov 21, 2024. Prices, plans, square footage, features and materials are subject to change at any time without notice and vary among communities. Listed prices are for informational purposes only, are not binding, and do not create any contractual obligation(s). The price of any home is dependent on numerous factors, all of which are unique to a specific home, and is not guaranteed until specified in a binding contract. Pricing of elevations and additional optional beds/baths vary per plan. Some plans require a premium homesite. Please ask the Community Manager for details. Renderings of homes are artist concepts and may not reflect exact colors and materials.

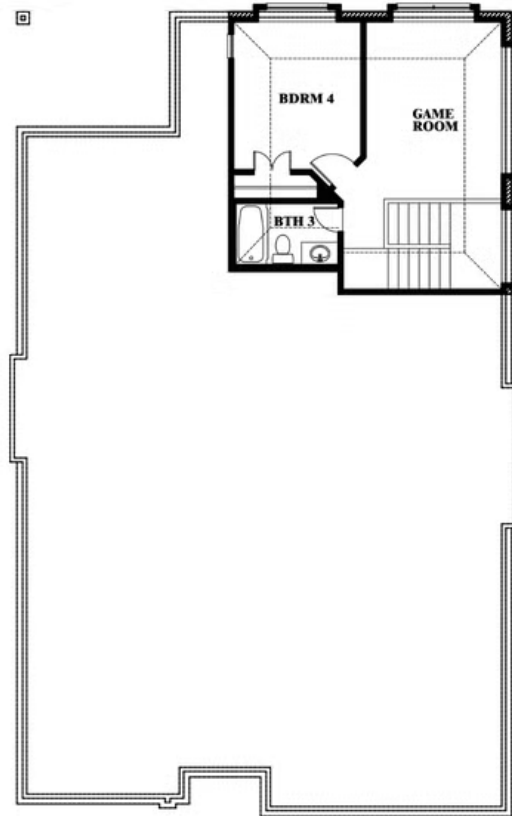
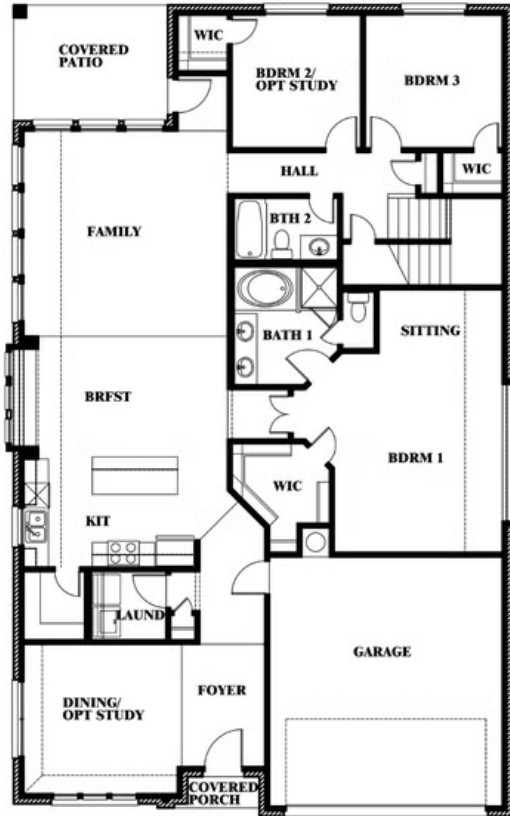
Cypress II

STONE RIVER GLEN 50S

2113 RIO PIEDRA DRIVE, ROYSE CITY, TX 75189



Cypress II



This brochure is for general informational purposes and is to be used as a guide only. Changes may be made during the development process and floorplans, dimensions, fixtures, fittings, finishes and specifications are subject to change without notice. Window placement, balcony configuration, wardrobe sizes and living areas may vary slightly within each plan type. EQUAL HOUSING OPPORTUNITY

