



# Primrose II

HOMES FROM  
**\$616,990**

CLASSIC SERIES

**CRYSTAL LAKE ESTATES**  
CRYSTAL LAKE LANE, RED OAK, TX 75154

**3,299**  
SQUARE FEET

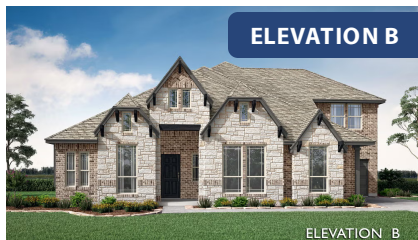
**3**  
BEDROOMS

**3.5**  
BATHROOMS

**3**  
CAR GARAGE



**ELEVATION A**



**ELEVATION B**

ELEVATION B



**ELEVATION C**

ELEVATION C



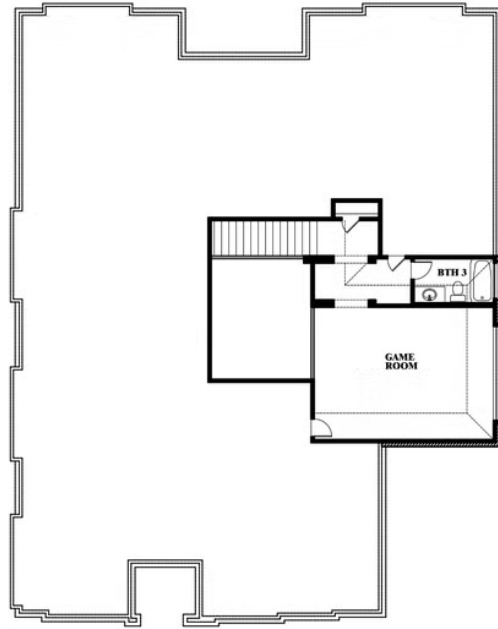


# Primrose II

**CRYSTAL LAKE ESTATES**  
CRYSTAL LAKE LANE, RED OAK, TX 75154



## Primrose II



This brochure is for general informational purposes and is to be used as a guide only. Changes may be made during the development process and floorplans, dimensions, fixtures, fittings, finishes and specifications are subject to change without notice. Window placement, balcony configuration, wardrobe sizes and living areas may vary slightly within each plan type. EQUAL HOUSING OPPORTUNITY

