



Violet II

HOMES FROM
\$504,990

CLASSIC SERIES

CREEKVIEW MEADOWS

FLOSSIE STREET, PILOT POINT, TX 75009

2,591
SQUARE FEET

3
BEDROOMS

2.5
BATHROOMS

2
CAR GARAGE



ELEVATION A



ELEVATION AS

ELEVATION AS



ELEVATION B

ELEVATION B



ELEVATION C

ELEVATION C



ELEVATION D

ELEVATION D





Violet II

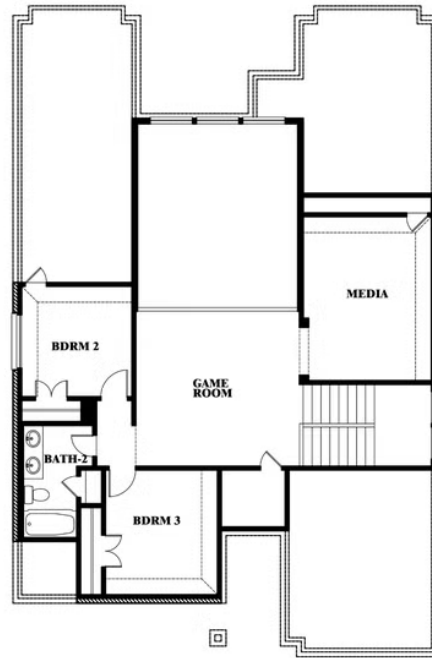
VIOLET II FLOOR PLAN

CREEKVIEW MEADOWS

FLOSSIE STREET, PILOT POINT, TX 75009



Violet II



This brochure is for general informational purposes and is to be used as a guide only. Changes may be made during the development process and floorplans, dimensions, fixtures, fittings, finishes and specifications are subject to change without notice. Window placement, balcony configuration, wardrobe sizes and living areas may vary slightly within each plan type. EQUAL HOUSING OPPORTUNITY





Violet II

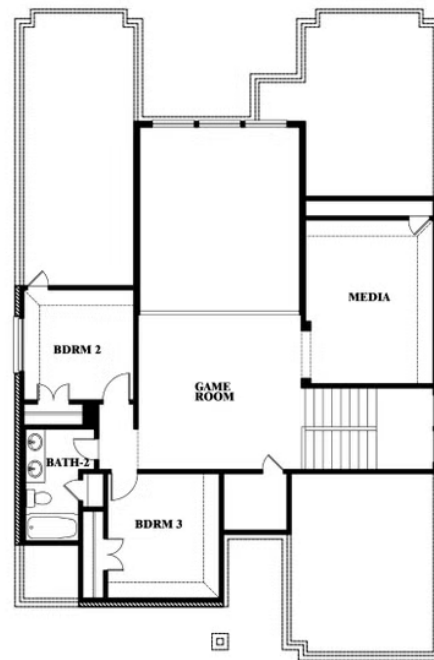
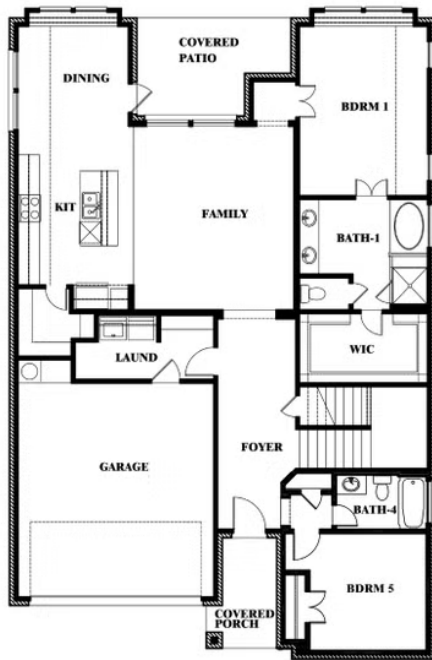
CREEKVIEW MEADOWS

FLOSSIE STREET, PILOT POINT, TX 75009

VIOLET II FLOOR PLAN WITH OPTIONAL BEDROOM AT STUDY



Violet II
Opt. Bed 5 & Bath 4 at Study



This brochure is for general informational purposes and is to be used as a guide only. Changes may be made during the development process and floorplans, dimensions, fixtures, fittings, finishes and specifications are subject to change without notice. Window placement, balcony configuration, wardrobe sizes and living areas may vary slightly within each plan type. EQUAL HOUSING OPPORTUNITY

