



# Violet

HOMES FROM  
**\$495,990**

CLASSIC SERIES

**CREEKVIEW MEADOWS**

FLOSSIE STREET, PILOT POINT, TX 75009

**2,381**  
SQUARE FEET

**3**  
BEDROOMS

**2.5**  
BATHROOMS

**2**  
CAR GARAGE



**ELEVATION A**



**ELEVATION AS**

ELEVATION AS



**ELEVATION B**

ELEVATION B



**ELEVATION C**

ELEVATION C



**ELEVATION D**

ELEVATION D





# Violet

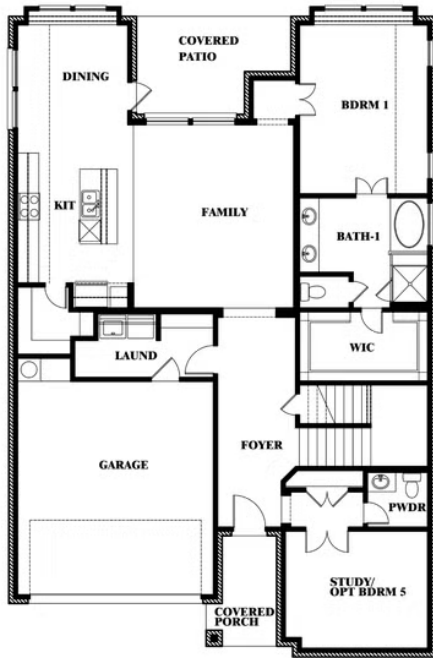
VIOLET FLOOR PLAN

## CREEKVIEW MEADOWS

FLOSSIE STREET, PILOT POINT, TX 75009



Violet



This brochure is for general informational purposes and is to be used as a guide only. Changes may be made during the development process and floorplans, dimensions, fixtures, fittings, finishes and specifications are subject to change without notice. Window placement, balcony configuration, wardrobe sizes and living areas may vary slightly within each plan type. EQUAL HOUSING OPPORTUNITY





# Violet

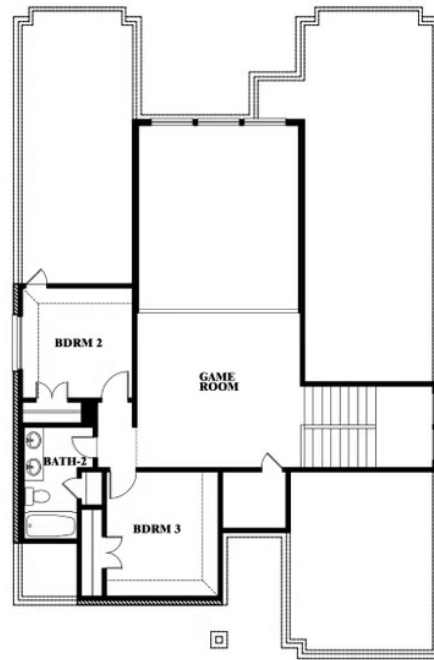
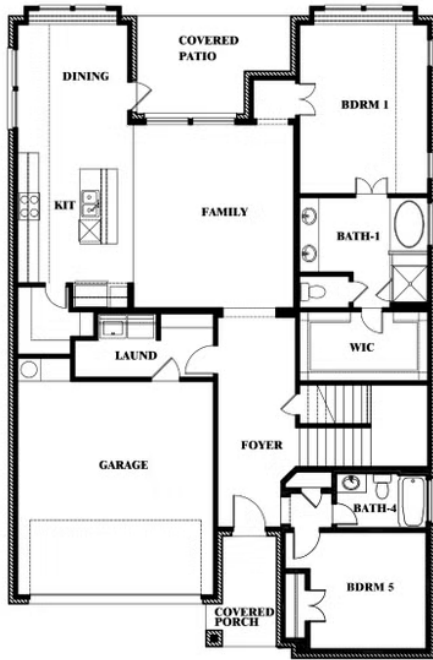
## CREEKVIEW MEADOWS

FLOSSIE STREET, PILOT POINT, TX 75009

**VIOLET FLOOR PLAN WITH OPTIONAL BEDROOM AT STUDY**



**Violet**  
Opt. Bed 5 & Bath 4 at Study



This brochure is for general informational purposes and is to be used as a guide only. Changes may be made during the development process and floorplans, dimensions, fixtures, fittings, finishes and specifications are subject to change without notice. Window placement, balcony configuration, wardrobe sizes and living areas may vary slightly within each plan type. EQUAL HOUSING OPPORTUNITY

