



# Rose

HOMES FROM  
**\$550,990**

CLASSIC SERIES

**CREEKVIEW MEADOWS**

FLOSSIE STREET, PILOT POINT, TX 75009

**3,359**  
SQUARE FEET

**4**  
BEDROOMS

**3.5**  
BATHROOMS

**2**  
CAR GARAGE



**ELEVATION A**



**ELEVATION AS**



**ELEVATION B**



**ELEVATION C**



**ELEVATION D**





# Rose

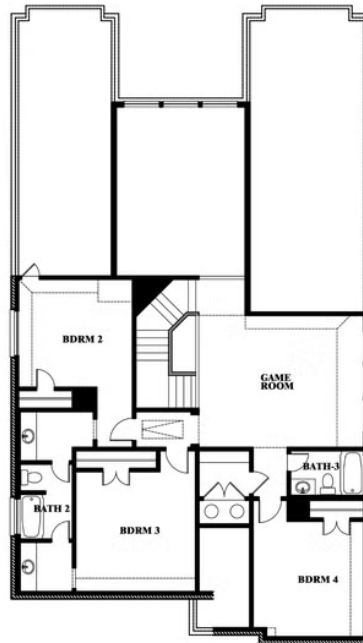
**ROSE FLOOR PLAN**

## CREEKVIEW MEADOWS

FLOSSIE STREET, PILOT POINT, TX 75009



Rose



This brochure is for general informational purposes and is to be used as a guide only. Changes may be made during the development process and floorplans, dimensions, fixtures, fittings, finishes and specifications are subject to change without notice. Window placement, balcony configuration, wardrobe sizes and living areas may vary slightly within each plan type. EQUAL HOUSING OPPORTUNITY





# Rose

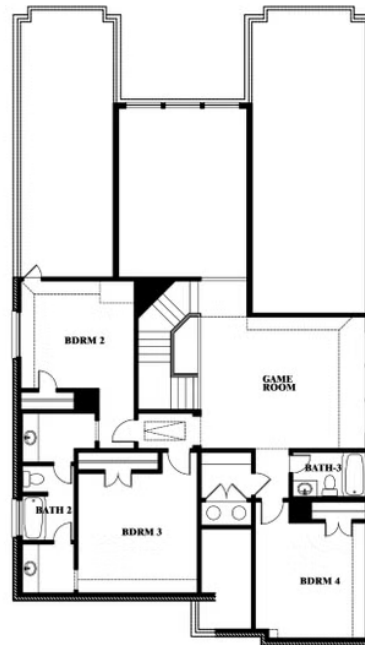
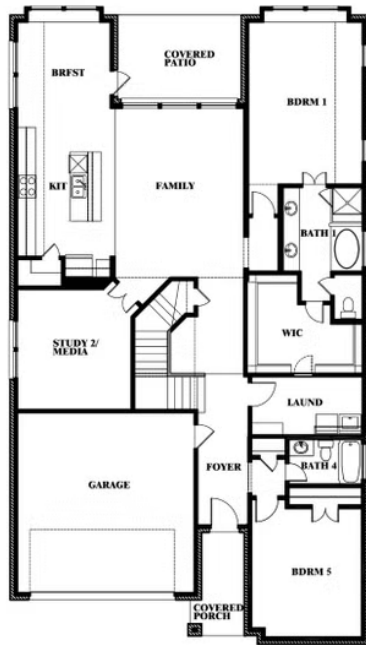
## CREEKVIEW MEADOWS

FLOSSIE STREET, PILOT POINT, TX 75009

**ROSE FLOOR PLAN WITH OPTIONAL BED & BATH AT STUDY**



Rose  
Opt. Bed & Bath at Study



This brochure is for general informational purposes and is to be used as a guide only. Changes may be made during the development process and floorplans, dimensions, fixtures, fittings, finishes and specifications are subject to change without notice. Window placement, balcony configuration, wardrobe sizes and living areas may vary slightly within each plan type. EQUAL HOUSING OPPORTUNITY

