



# Violet IV

HOMES FROM  
**\$503,990**

CLASSIC SERIES

## THE GROVE

606 MESQUITE GROVE ROAD, MIDLOTHIAN, TX 76065

**2,838**  
SQUARE FEET

**4**  
BEDROOMS

**3.5**  
BATHROOMS

**2**  
CAR GARAGE



**ELEVATION A**



**ELEVATION AS**

ELEVATION AS



**ELEVATION B**

ELEVATION B



**ELEVATION C**

ELEVATION C



**ELEVATION D**

ELEVATION D





# Violet IV

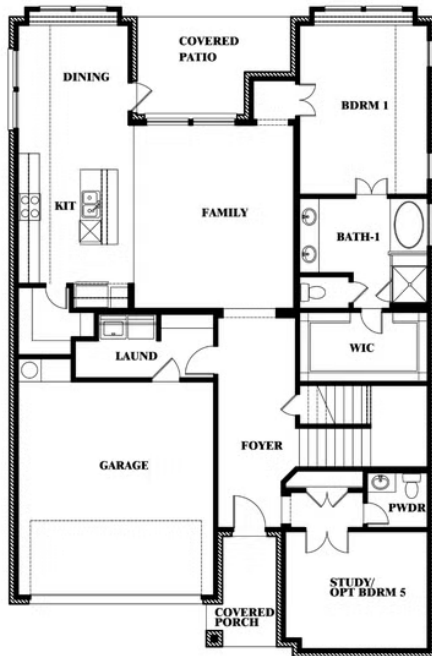
**VIOLET IV FLOOR PLAN**

## THE GROVE

606 MESQUITE GROVE ROAD, MIDLOTHIAN, TX 76065



### Violet IV



This brochure is for general informational purposes and is to be used as a guide only. Changes may be made during the development process and floorplans, dimensions, fixtures, fittings, finishes and specifications are subject to change without notice. Window placement, balcony configuration, wardrobe sizes and living areas may vary slightly within each plan type. EQUAL HOUSING OPPORTUNITY





# Violet IV

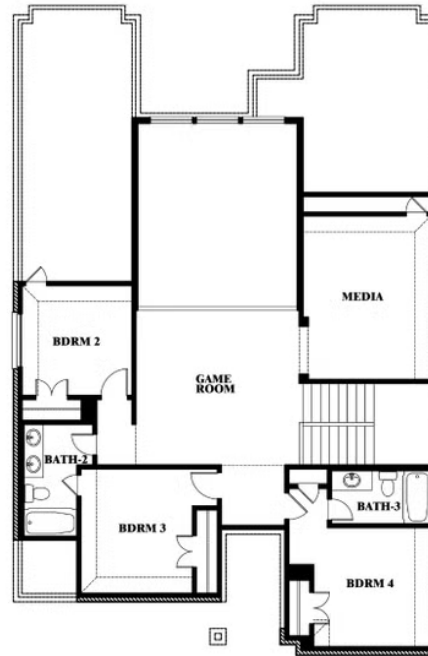
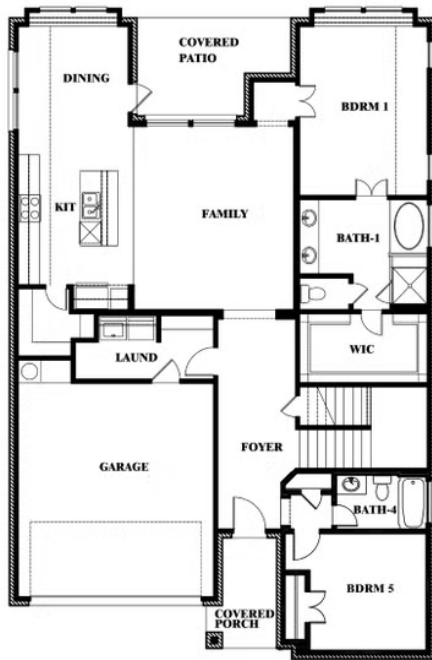
## THE GROVE

606 MESQUITE GROVE ROAD, MIDLOTHIAN, TX 76065

**VIOLET IV FLOOR PLAN WITH OPTIONAL BEDROOM AT STUDY**



### Violet IV Opt. Bed 5 & Bath 4 at Study



This brochure is for general informational purposes and is to be used as a guide only. Changes may be made during the development process and floorplans, dimensions, fixtures, fittings, finishes and specifications are subject to change without notice. Window placement, balcony configuration, wardrobe sizes and living areas may vary slightly within each plan type. EQUAL HOUSING OPPORTUNITY

