



# 3609 Ridge Meadow Drive

MIDLOTHIAN, TX 76065

**THE GROVE**

CAROLINA IV SIDE ENTRY FLOOR PLAN

PRICED AT

~~\$607,356~~ **\$549,000****3435**  
SQUARE FEET**4**  
BEDROOMS**3.0**  
BATHROOMS**2.5**  
CAR GARAGE

Features 4 bedrooms, 3 baths, a Study with glass French doors, an open Family Room & Kitchen, a Game Room, a Media Room, and a 2.5-car garage with a cedar door. Step into elegance with a Formal Dining Room, a cozy Family room enhanced by Stone-to-Ceiling Fireplace; and an Extended Covered Rear Patio overlooking a large, fully sodded yard with a sprinkler system and privacy-fenced yard. Deluxe Kitchen has a walk-in pantry, buffet, quartz countertops, and under-cabinet lighting. The spacious Primary Suite retreat is just for you with a sitting area and an ensuite bath that includes a shower & soaking tub. 2 additional bedrooms share a full bath across the home. Upstairs discover the Game Room, Media Room with Surround Sound, Tech Center, and a large bedroom sharing a bath with the Game Room. Blinds, Gutters & MORE upgrades included! Perfectly positioned on a corner homesite. Contact Bloomfield at The Grove today!





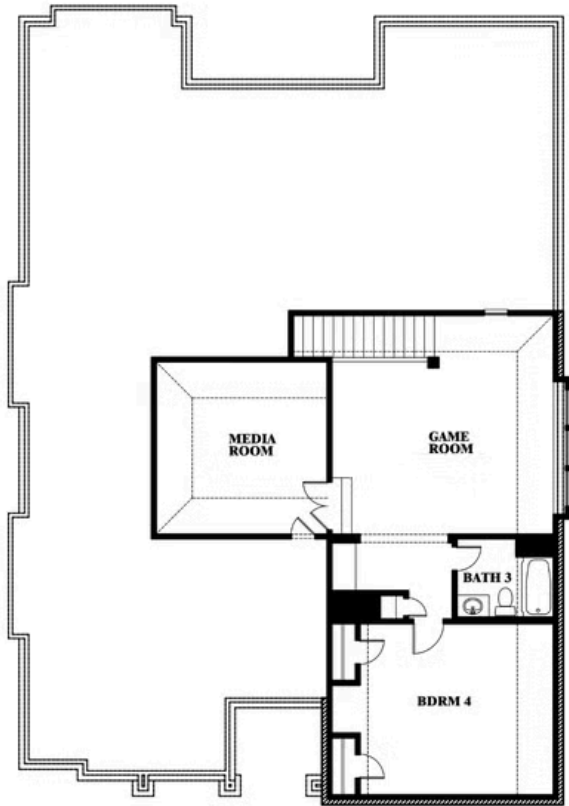
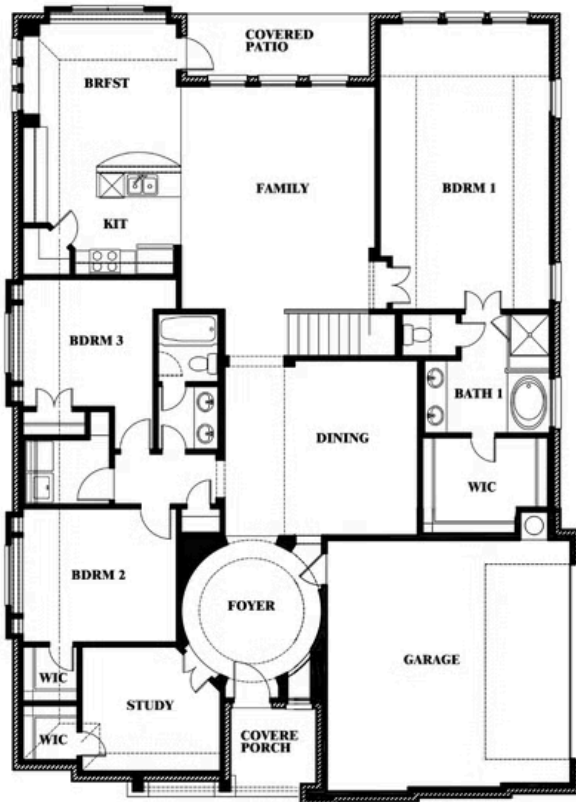
# 3609 Ridge Meadow Drive

MIDLOTHIAN, TX 76065

CAROLINA IV SIDE ENTRY FLOOR PLAN



## Carolina IV Side Entry



This brochure is for general informational purposes and is to be used as a guide only. Changes may be made during the development process and floorplans, dimensions, fixtures, fittings, finishes and specifications are subject to change without notice. Window placement, balcony configuration, wardrobe sizes and living areas may vary slightly within each plan type. EQUAL HOUSING OPPORTUNITY

