



3224 Southampton Drive

MESQUITE, TX 75181

RIDGE RANCH CLASSIC 50

CYPRESS II FLOOR PLAN

PRICED AT

~~\$471,124~~ **\$461,124****2459**
SQUARE FEET**4**
BEDROOMS**3.0**
BATHROOMS**2**
CAR GARAGE

Architectural Stone and Brick exterior with charming windows, stone-edged flower beds through the landscaping, uplights, custom 8' front door - even gutters! The wide foyer entrance showcases double glass doors to the Study (or use as a Formal Dining) and beautiful RevWood floors leading into the open-concept living space. Quartz countertops, built-in gas range with a wood vent hood, pot and pan drawers, island with sink and pendant lights, glass door at the walk-in pantry, custom backsplash, and upgraded cabinets with under-lighting ensure a seamless kitchen experience! The upstairs layout is comprised of a Game Room, Bedroom 4, and Bath 3 giving you the opportunity to provide a private guest suite or hobby space. Additional upgrades include extra recessed Family Room lights, 2" faux wood blinds, a Family Room window seat, and a tankless water heater! The community offers a pool, park, and close schools. Visit Bloomfield at Ridge Ranch today!





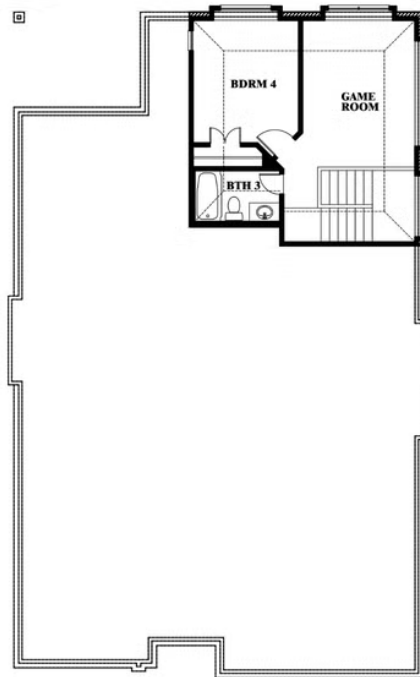
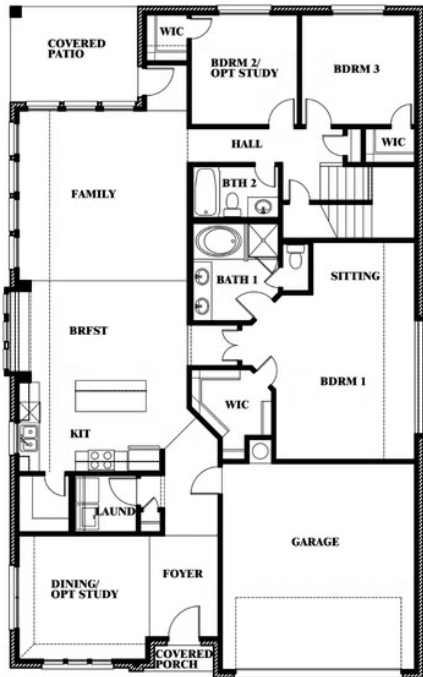
3224 Southampton Drive

CYPRESS II FLOOR PLAN

MESQUITE, TX 75181



Cypress II



This brochure is for general informational purposes and is to be used as a guide only. Changes may be made during the development process and floorplans, dimensions, fixtures, fittings, finishes and specifications are subject to change without notice. Window placement, balcony configuration, wardrobe sizes and living areas may vary slightly within each plan type. EQUAL HOUSING OPPORTUNITY

