

# Magnolia II

CLASSIC SERIES

## WILLOW WOOD CLASSIC 60

5709 CYPRESSWOOD LANE, MCKINNEY, TX 75071

HOMES FROM

**\$648,990**

**3,430**

SQUARE FEET

**4**

BEDROOMS

**2.5**

BATHROOMS

**2**

CAR GARAGE



# Magnolia II

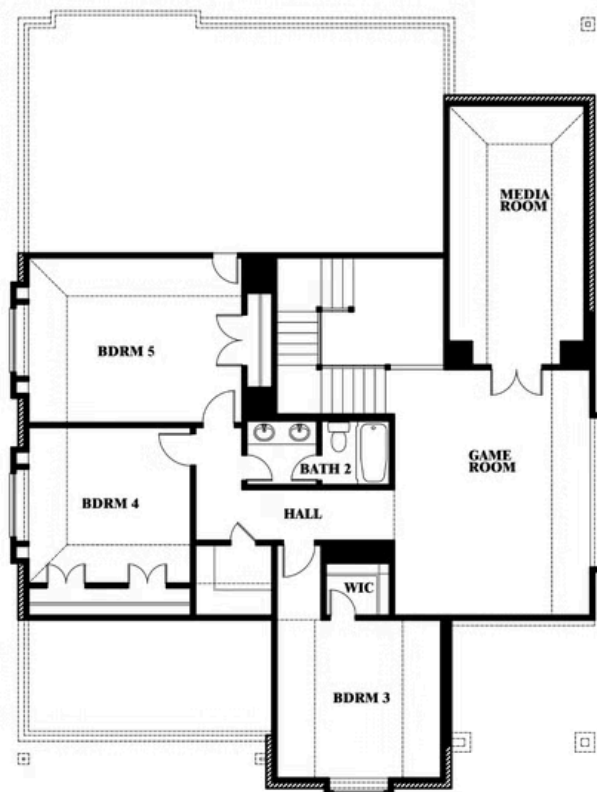
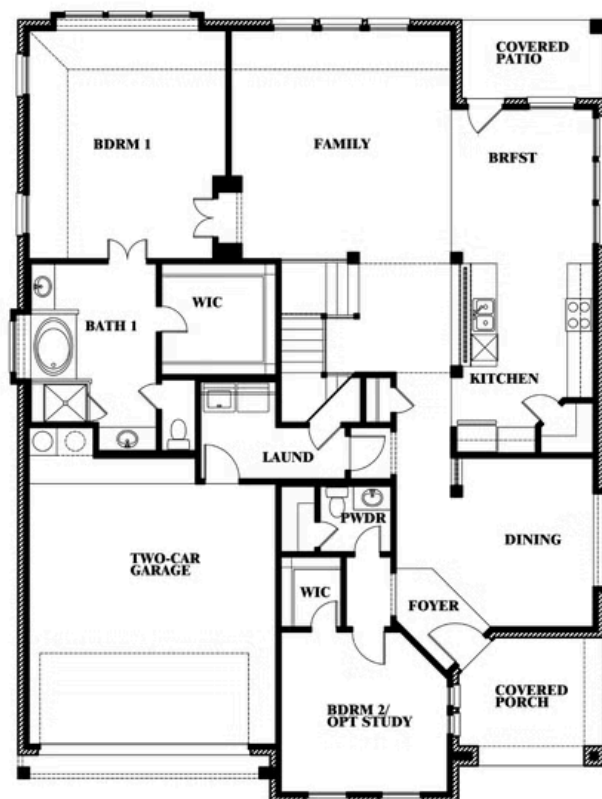
## WILLOW WOOD CLASSIC 60

5709 CYPRESSWOOD LANE, MCKINNEY, TX 75071

### MAGNOLIA II FLOOR PLAN



## Magnolia II



This brochure is for general informational purposes and is to be used as a guide only. Changes may be made during the development process and floorplans, dimensions, fixtures, fittings, finishes and specifications are subject to change without notice. Window placement, balcony configuration, wardrobe sizes and living areas may vary slightly within each plan type. EQUAL HOUSING OPPORTUNITY