



Violet IV

HOMES FROM
\$609,990

CLASSIC SERIES

WILLOW WOOD CLASSIC 50

5709 CYPRESSWOOD LANE, MCKINNEY, TX 75071

2,838
SQUARE FEET

4
BEDROOMS

3.5
BATHROOMS

2
CAR GARAGE



ELEVATION A



ELEVATION AS

ELEVATION AS



ELEVATION B

ELEVATION B



ELEVATION C

ELEVATION C



ELEVATION D

ELEVATION D





Violet IV

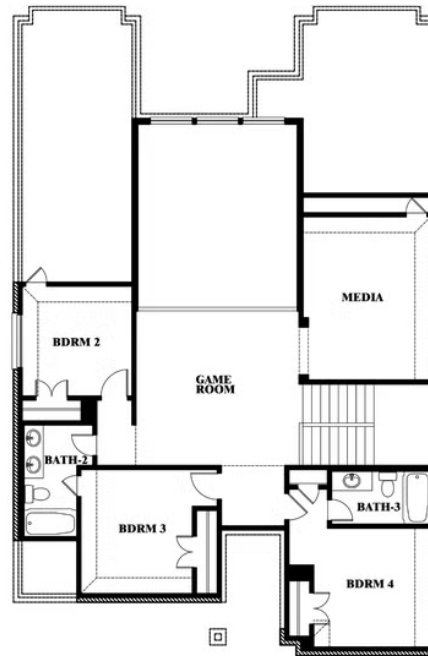
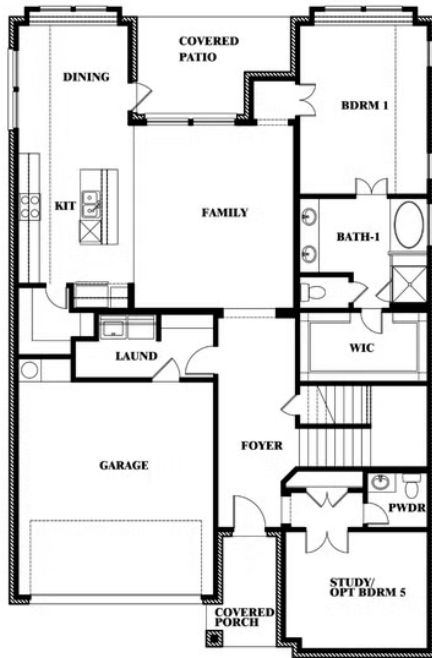
VIOLET IV FLOOR PLAN

WILLOW WOOD CLASSIC 50

5709 CYPRESSWOOD LANE, MCKINNEY, TX 75071



Violet IV



This brochure is for general informational purposes and is to be used as a guide only. Changes may be made during the development process and floorplans, dimensions, fixtures, fittings, finishes and specifications are subject to change without notice. Window placement, balcony configuration, wardrobe sizes and living areas may vary slightly within each plan type. EQUAL HOUSING OPPORTUNITY





Violet IV

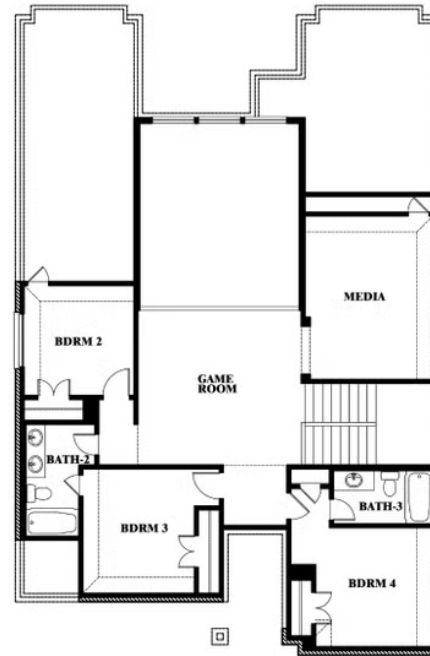
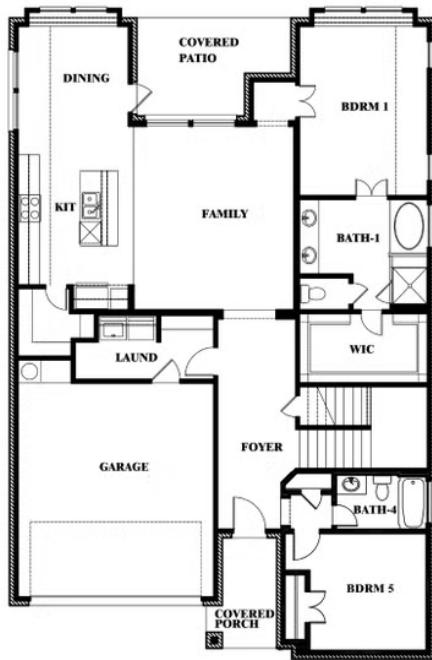
WILLOW WOOD CLASSIC 50

5709 CYPRESSWOOD LANE, MCKINNEY, TX 75071

VIOLET IV FLOOR PLAN WITH OPTIONAL BEDROOM AT STUDY



Violet IV
Opt. Bed 5 & Bath 4 at Study



This brochure is for general informational purposes and is to be used as a guide only. Changes may be made during the development process and floorplans, dimensions, fixtures, fittings, finishes and specifications are subject to change without notice. Window placement, balcony configuration, wardrobe sizes and living areas may vary slightly within each plan type. EQUAL HOUSING OPPORTUNITY

