



Violet II

HOMES FROM
\$584,990

CLASSIC SERIES

WILLOW WOOD CLASSIC 50

5709 CYPRESSWOOD LANE, MCKINNEY, TX 75071

2,591
SQUARE FEET

3
BEDROOMS

2.5
BATHROOMS

2
CAR GARAGE



ELEVATION A



ELEVATION AS

ELEVATION AS



ELEVATION B

ELEVATION B



ELEVATION C

ELEVATION C



ELEVATION D

ELEVATION D





Violet II

VIOLET II FLOOR PLAN

WILLOW WOOD CLASSIC 50

5709 CYPRESSWOOD LANE, MCKINNEY, TX 75071



Violet II



This brochure is for general informational purposes and is to be used as a guide only. Changes may be made during the development process and floorplans, dimensions, fixtures, fittings, finishes and specifications are subject to change without notice. Window placement, balcony configuration, wardrobe sizes and living areas may vary slightly within each plan type. EQUAL HOUSING OPPORTUNITY





Violet II

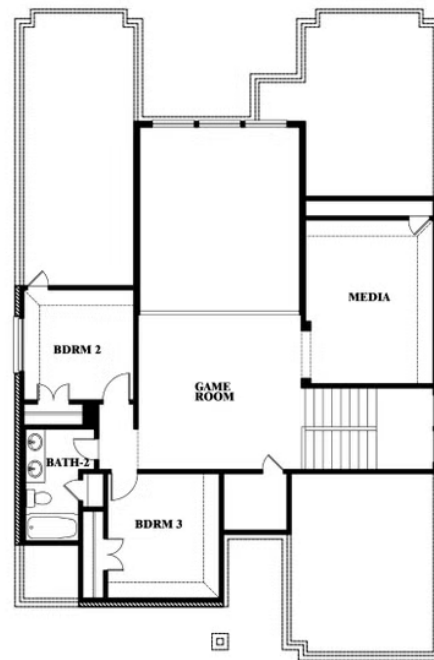
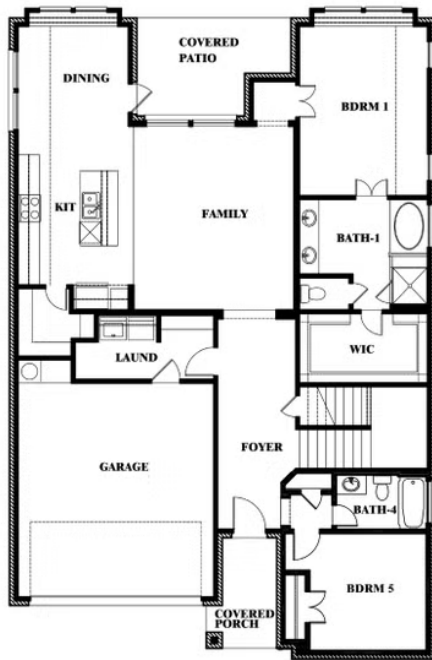
WILLOW WOOD CLASSIC 50

5709 CYPRESSWOOD LANE, MCKINNEY, TX 75071

VIOLET II FLOOR PLAN WITH OPTIONAL BEDROOM AT STUDY



Violet II Opt. Bed 5 & Bath 4 at Study



This brochure is for general informational purposes and is to be used as a guide only. Changes may be made during the development process and floorplans, dimensions, fixtures, fittings, finishes and specifications are subject to change without notice. Window placement, balcony configuration, wardrobe sizes and living areas may vary slightly within each plan type. EQUAL HOUSING OPPORTUNITY

