



# Violet IV

CLASSIC SERIES

## PAINTED TREE WOODLAND DISTRICT 60

5709 CYPRESSWOOD LANE, MCKINNEY, TX 75071

HOMES FROM

**\$707,990**

**2,838**

SQUARE FEET

**4**

BEDROOMS

**3.5**

BATHROOMS

**2**

CAR GARAGE



**ELEVATION C**



**ELEVATION A**

ELEVATION A



**ELEVATION AS**

ELEVATION AS



**ELEVATION B**

ELEVATION B



**ELEVATION D**

ELEVATION D

# Violet IV

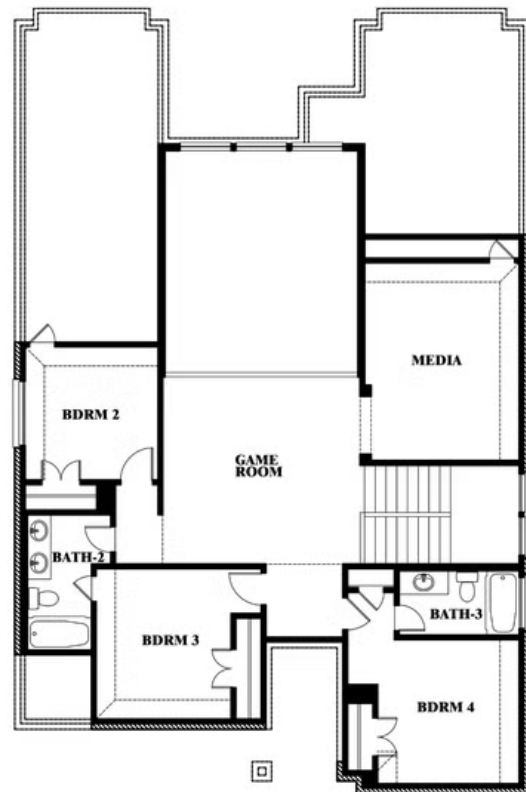
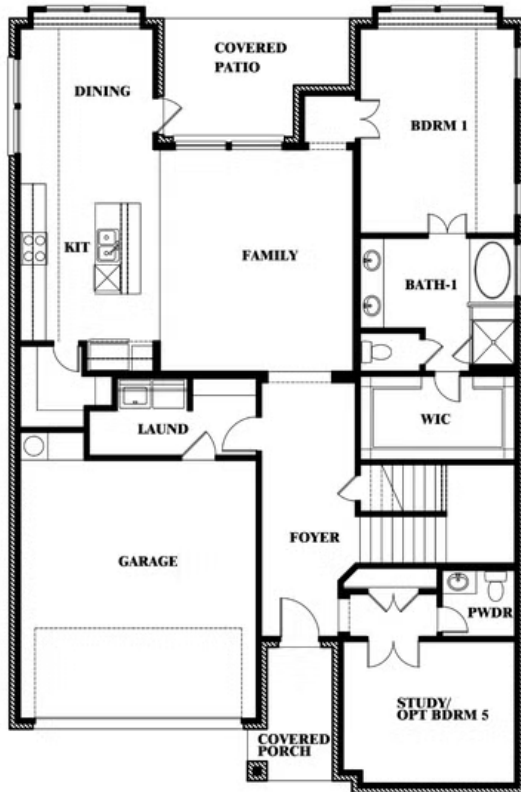
## VIOLET IV FLOOR PLAN

## PAINTED TREE WOODLAND DISTRICT 60

5709 CYPRESSWOOD LANE, MCKINNEY, TX 75071



## Violet IV



This brochure is for general informational purposes and is to be used as a guide only. Changes may be made during the development process and floorplans, dimensions, fixtures, fittings, finishes and specifications are subject to change without notice. Window placement, balcony configuration, wardrobe sizes and living areas may vary slightly within each plan type. **EQUAL HOUSING OPPORTUNITY**



# Violet IV

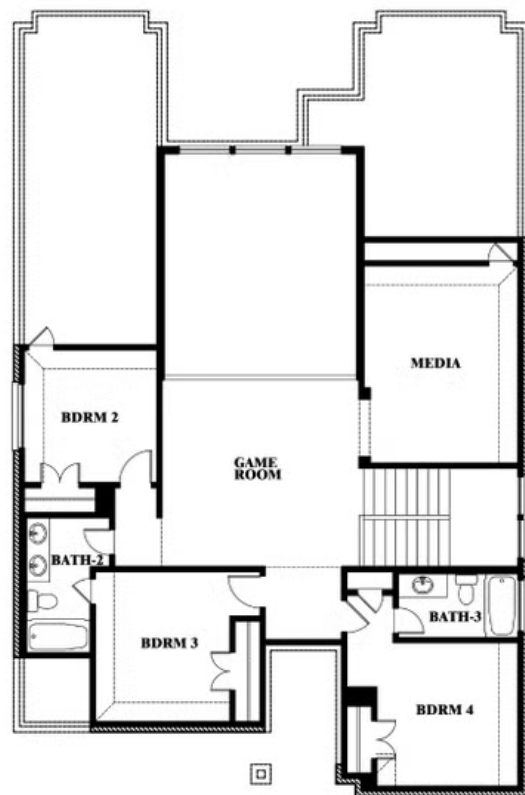
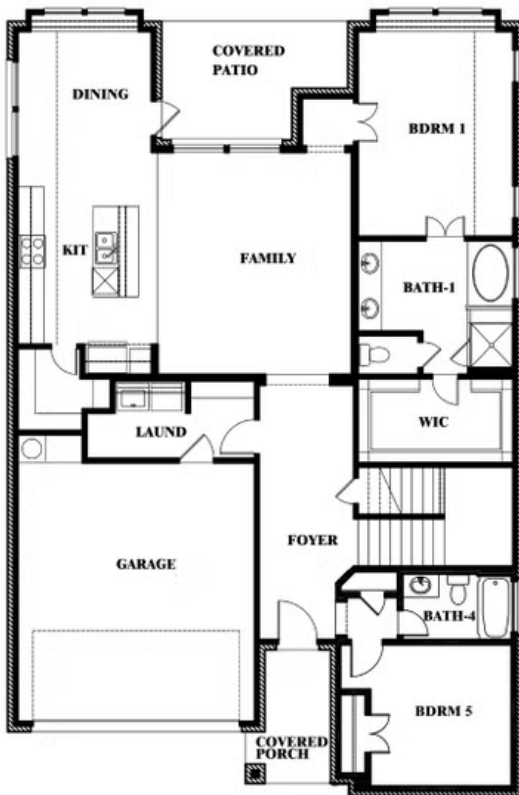
**VIOLET IV FLOOR PLAN WITH OPTIONAL BEDROOM AT STUDY**

## PAINTED TREE WOODLAND DISTRICT 60

5709 CYPRESSWOOD LANE, MCKINNEY, TX 75071



## Violet IV Opt. Bed 5 & Bath 4 at Study



This brochure is for general informational purposes and is to be used as a guide only. Changes may be made during the development process and floorplans, dimensions, fixtures, fittings, finishes and specifications are subject to change without notice. Window placement, balcony configuration, wardrobe sizes and living areas may vary slightly within each plan type. EQUAL HOUSING OPPORTUNITY