



Dewberry III

CLASSIC SERIES

PAINTED TREE WOODLAND DISTRICT 60

5709 CYPRESSWOOD LANE, MCKINNEY, TX 75071

HOMES FROM

\$719,990

3,261
SQUARE FEET

5
BEDROOMS

3.5
BATHROOMS

2
CAR GARAGE

ELEVATION A



ELEVATION AS



ELEVATION AS

ELEVATION C



ELEVATION C

ELEVATION CS



ELEVATION CS

ELEVATION D



ELEVATION D



Dewberry III

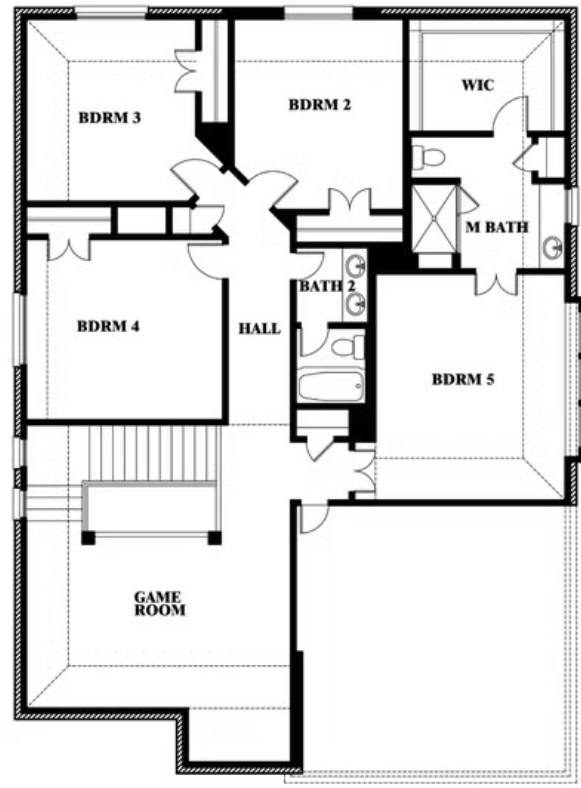
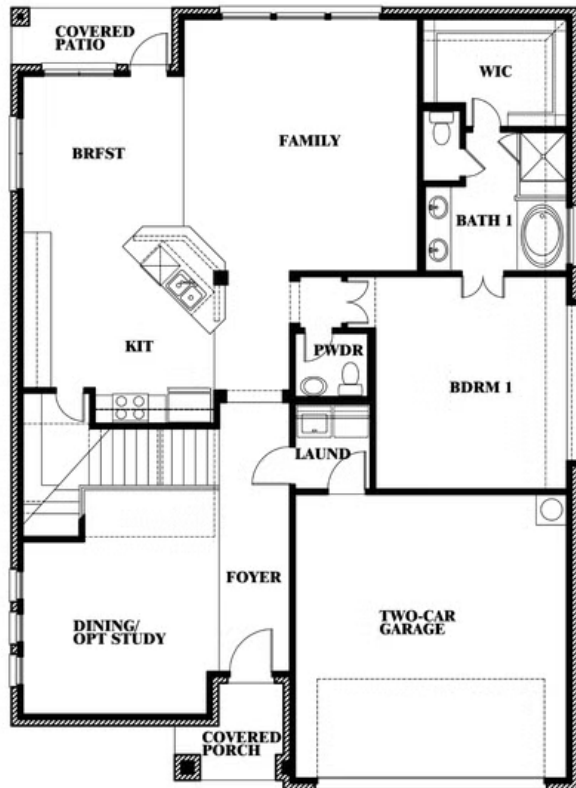
DEWBERRY III FLOOR PLAN

PAINTED TREE WOODLAND DISTRICT 60

5709 CYPRESSWOOD LANE, MCKINNEY, TX 75071



Dewberry III



This brochure is for general informational purposes and is to be used as a guide only. Changes may be made during the development process and floorplans, dimensions, fixtures, fittings, finishes and specifications are subject to change without notice. Window placement, balcony configuration, wardrobe sizes and living areas may vary slightly within each plan type. EQUAL HOUSING OPPORTUNITY



Dewberry III

DEWBERRY III FLOOR PLAN WITH OPTIONAL JACK & JILL

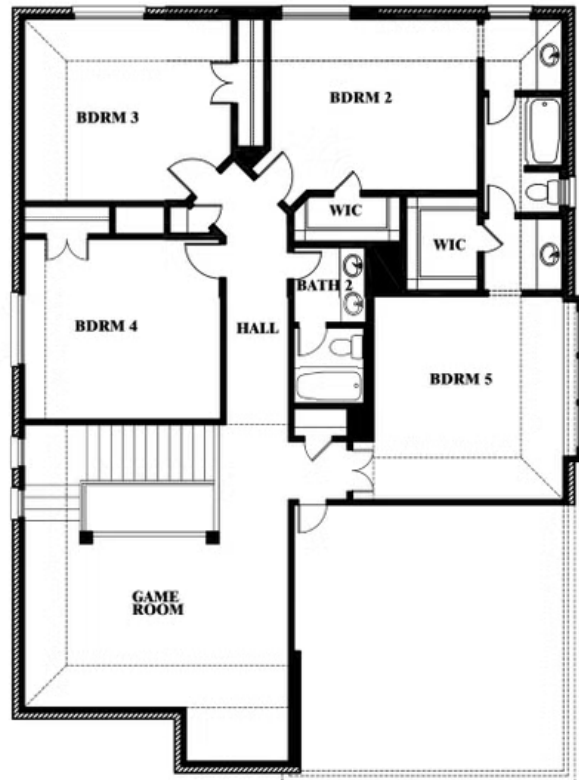
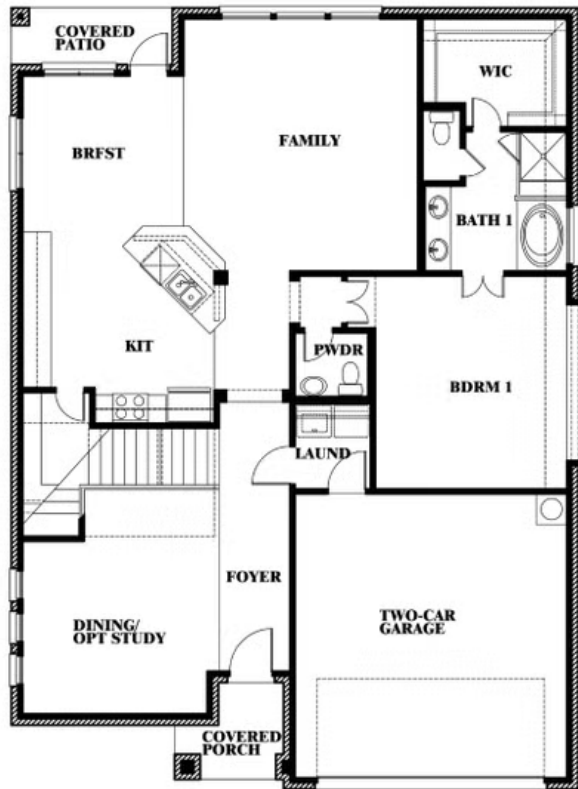
PAINTED TREE WOODLAND DISTRICT 60

5709 CYPRESSWOOD LANE, MCKINNEY, TX 75071



Dewberry III

Opt. Jack & Jill Bath at Bedroom 2 & 5



This brochure is for general informational purposes and is to be used as a guide only. Changes may be made during the development process and floorplans, dimensions, fixtures, fittings, finishes and specifications are subject to change without notice. Window placement, balcony configuration, wardrobe sizes and living areas may vary slightly within each plan type. EQUAL HOUSING OPPORTUNITY