



Hawthorne II Side Entry

HOMES FROM
\$610,990

CLASSIC SERIES

TRIPLE DIAMOND RANCH
GAVIN DRIVE, MANSFIELD, TX 76063

2,763
SQUARE FEET

4
BEDROOMS

3.0
BATHROOMS

2
CAR GARAGE



ELEVATION T



ELEVATION S

ELEVATION S



ELEVATION R

ELEVATION R



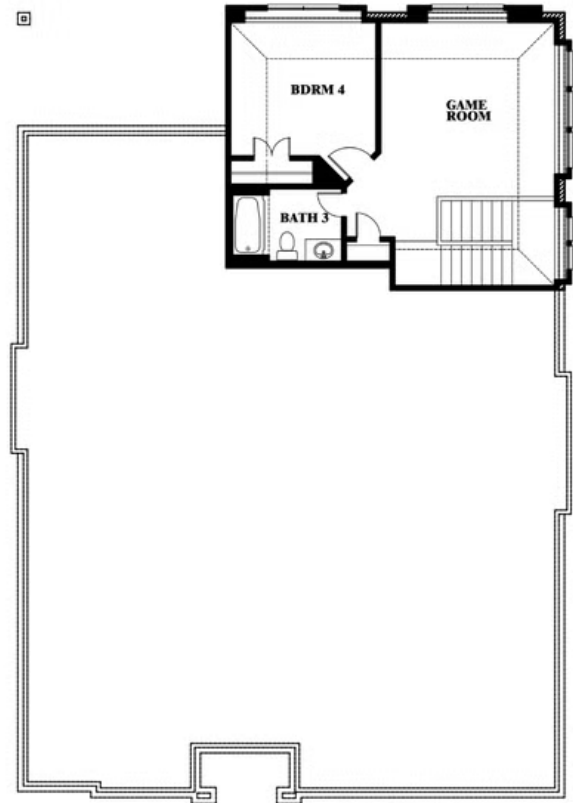
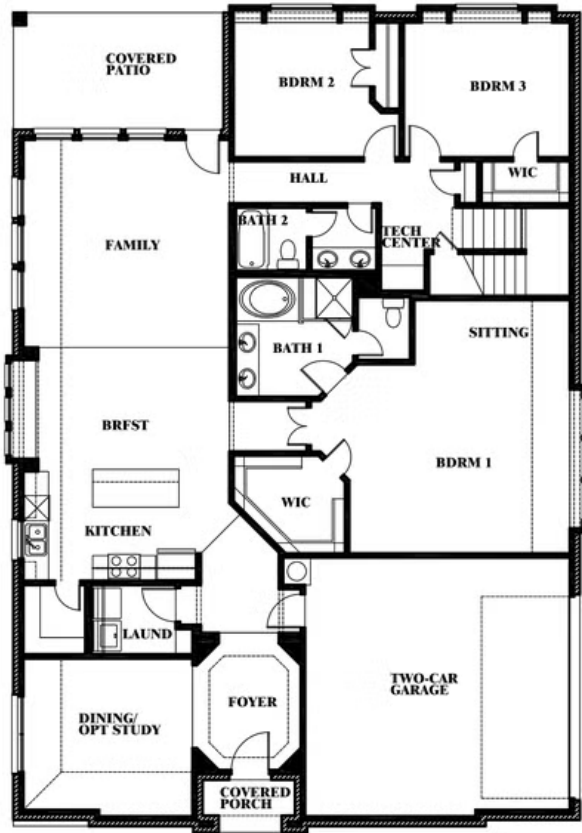


Hawthorne II Side Entry

TRIPLE DIAMOND RANCH
GAVIN DRIVE, MANSFIELD, TX 76063



Hawthorne II Side Entry



This brochure is for general informational purposes and is to be used as a guide only. Changes may be made during the development process and floorplans, dimensions, fixtures, fittings, finishes and specifications are subject to change without notice. Window placement, balcony configuration, wardrobe sizes and living areas may vary slightly within each plan type. EQUAL HOUSING OPPORTUNITY

