



# Carolina II Side Entry

HOMES FROM  
**\$626,990**

CLASSIC SERIES

**TRIPLE DIAMOND RANCH**

, MANSFIELD, TX 76063

**2,777**  
SQUARE FEET

**3**  
BEDROOMS

**3.0**  
BATHROOMS

**2**  
CAR GARAGE



**ELEVATION R**



**ELEVATION S**

**ELEVATION S**



**ELEVATION T**

**ELEVATION T**



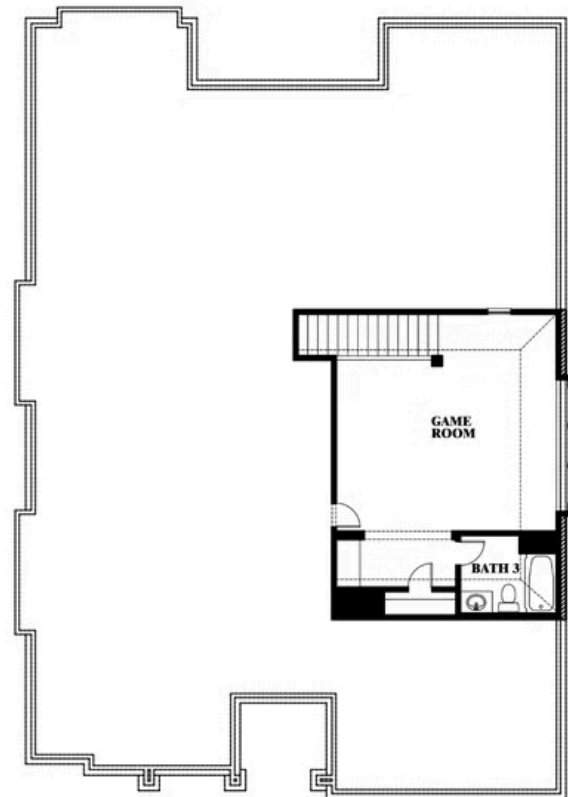
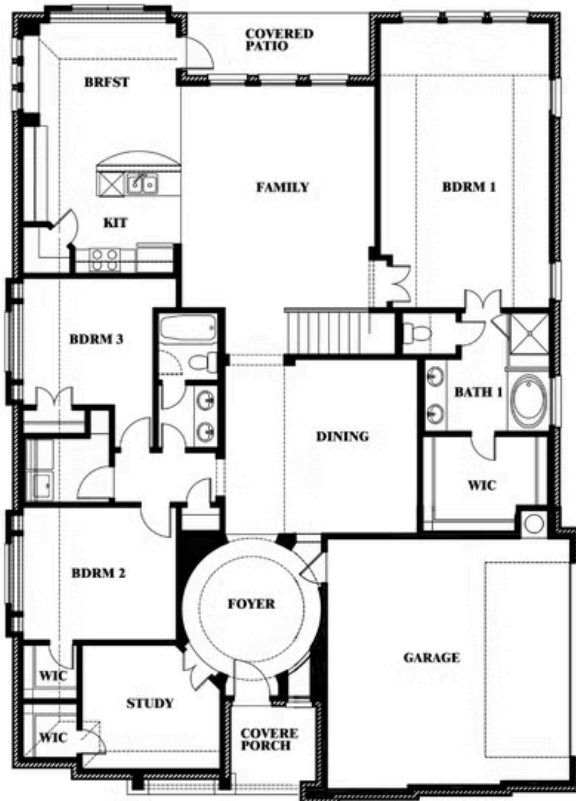


# Carolina II Side Entry

**TRIPLE DIAMOND RANCH**  
MANSFIELD, TX 76063



## Carolina II Side Entry



This brochure is for general informational purposes and is to be used as a guide only. Changes may be made during the development process and floorplans, dimensions, fixtures, fittings, finishes and specifications are subject to change without notice. Window placement, balcony configuration, wardrobe sizes and living areas may vary slightly within each plan type. EQUAL HOUSING OPPORTUNITY

