



Dogwood III

HOMES FROM
\$496,990

CLASSIC SERIES

SOMERSET CLASSIC 60S

3308 LAKEMONT DRIVE, MANSFIELD, TX 76084

2.5 Car Garage

2,333
SQUARE FEET

4
BEDROOMS

3.0
BATHROOMS

2.5
CAR GARAGE





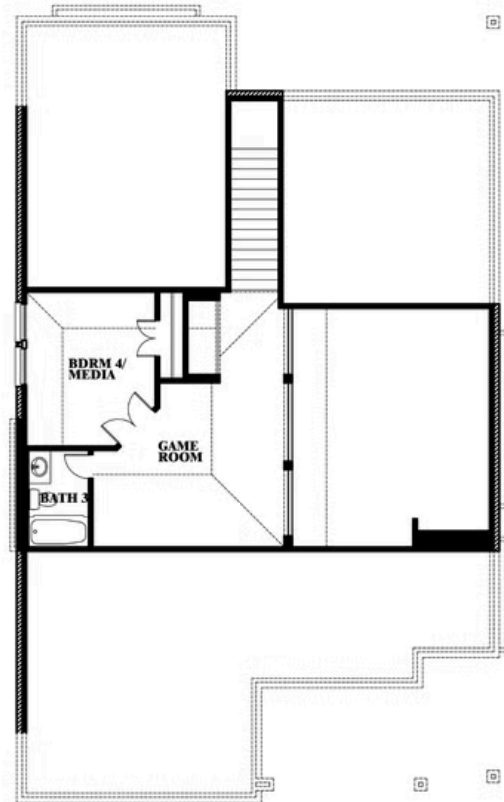
Dogwood III

SOMERSET CLASSIC 60S

3308 LAKEMONT DRIVE, MANSFIELD, TX 76084



Dogwood III



This brochure is for general informational purposes and is to be used as a guide only. Changes may be made during the development process and floorplans, dimensions, fixtures, fittings, finishes and specifications are subject to change without notice. Window placement, balcony configuration, wardrobe sizes and living areas may vary slightly within each plan type. EQUAL HOUSING OPPORTUNITY

