



# Primrose FE VI

CLASSIC SERIES

**ROCKWOOD 90**

2407 ROYAL DOVE LANE, MANSFIELD, TX 76063

HOMES FROM  
**\$768,990**

**4,065**  
SQUARE FEET

**5**  
BEDROOMS

**4.5**  
BATHROOMS

**3**  
CAR GARAGE



**ELEVATION A**



**ELEVATION B**

ELEVATION B



**ELEVATION C**

ELEVATION C





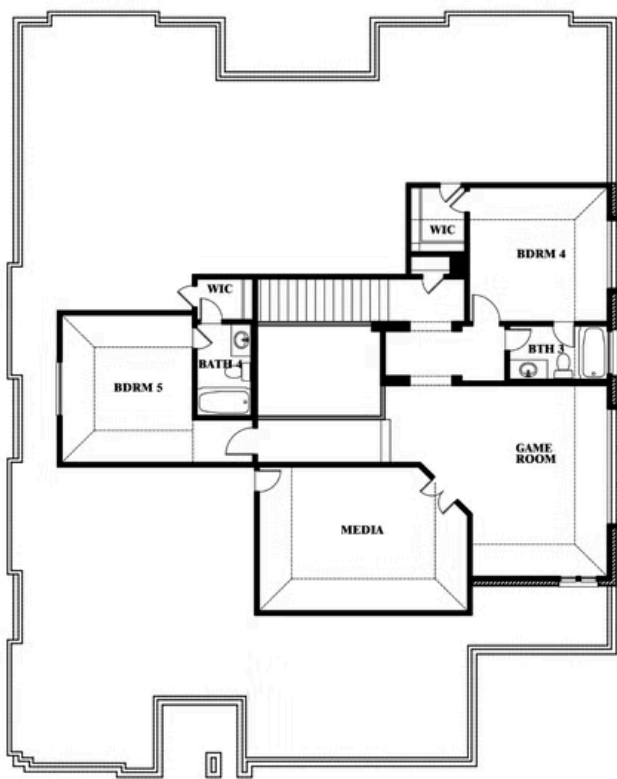
# Primrose FE VI

## ROCKWOOD 90

2407 ROYAL DOVE LANE, MANSFIELD, TX 76063



## Primrose FE VI



This brochure is for general informational purposes and is to be used as a guide only. Changes may be made during the development process and floorplans, dimensions, fixtures, fittings, finishes and specifications are subject to change without notice. Window placement, balcony configuration, wardrobe sizes and living areas may vary slightly within each plan type. EQUAL HOUSING OPPORTUNITY

