



Carolina II

HOMES FROM

\$623,990 - \$633,990

CLASSIC SERIES

UNION PARK

1817 RUNNING CREEK TRAIL, LITTLE ELM, TX 76227

2,771
SQUARE FEET

3
BEDROOMS

3.0
BATHROOMS

2
CAR GARAGE



ELEVATION D



ELEVATION A

ELEVATION A



ELEVATION AS

ELEVATION AS



ELEVATION C

ELEVATION C





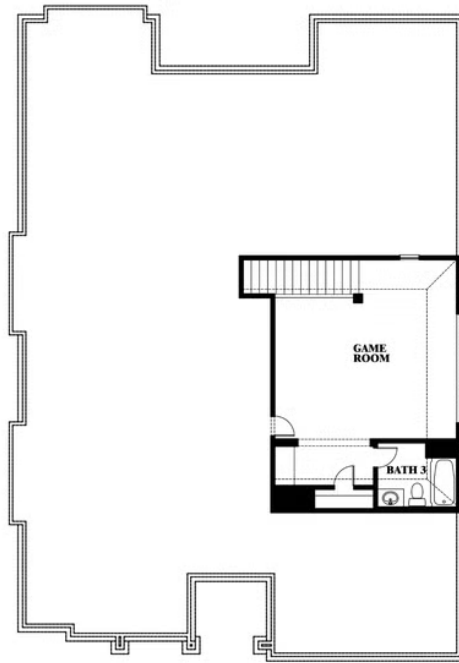
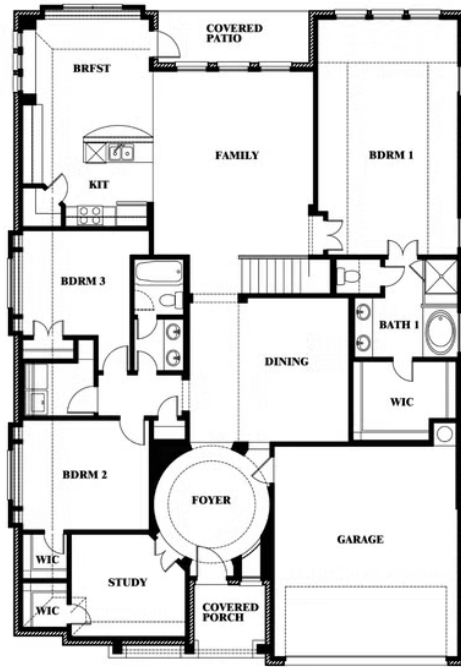
Carolina II

UNION PARK

1817 RUNNING CREEK TRAIL, LITTLE ELM, TX 76227



Carolina II



This brochure is for general informational purposes and is to be used as a guide only. Changes may be made during the development process and floorplans, dimensions, fixtures, fittings, finishes and specifications are subject to change without notice. Window placement, balcony configuration, wardrobe sizes and living areas may vary slightly within each plan type. EQUAL HOUSING OPPORTUNITY





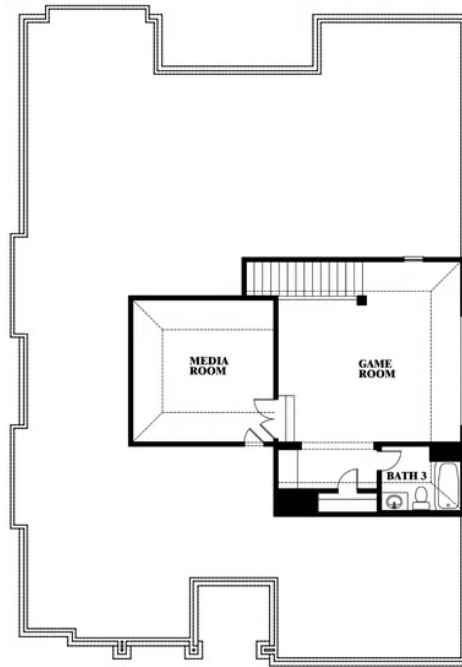
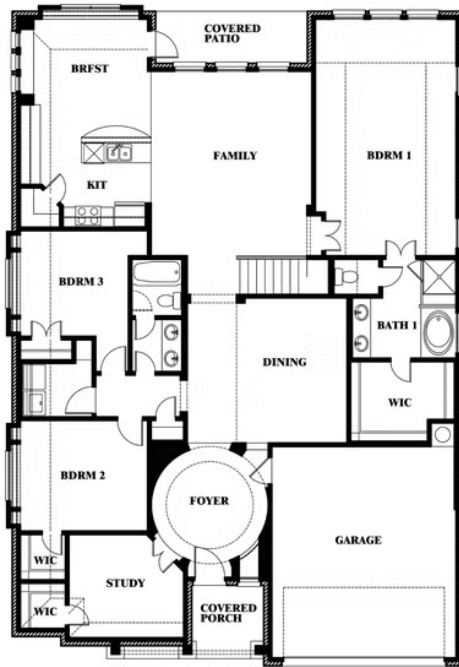
Carolina II

UNION PARK

1817 RUNNING CREEK TRAIL, LITTLE ELM, TX 76227



Carolina II with Media Room



This brochure is for general informational purposes and is to be used as a guide only. Changes may be made during the development process and floorplans, dimensions, fixtures, fittings, finishes and specifications are subject to change without notice. Window placement, balcony configuration, wardrobe sizes and living areas may vary slightly within each plan type. EQUAL HOUSING OPPORTUNITY

