



# Rose II

HOMES FROM  
**\$673,990**

CLASSIC SERIES

## UNION PARK CLASSIC 60

1817 RUNNING CREEK TRAIL, LITTLE ELM, TX 76227

**3,557**  
SQUARE FEET

**4**  
BEDROOMS

**3.5**  
BATHROOMS

**2.5**  
CAR GARAGE



**ELEVATION A**



**ELEVATION AS**

ELEVATION AS



**ELEVATION B**

ELEVATION B



**ELEVATION C**

ELEVATION C



**ELEVATION D**

ELEVATION D



Document generated Nov 21, 2024. Prices, plans, square footage, features and materials are subject to change at any time without notice and vary among communities. Listed prices are for informational purposes only, are not binding, and do not create any contractual obligation(s). The price of any home is dependent on numerous factors, all of which are unique to a specific home, and is not guaranteed until specified in a binding contract. Pricing of elevations and additional optional beds/baths vary per plan. Some plans require a premium homesite. Please ask the Community Manager for details. Renderings of homes are artist concepts and may not reflect exact colors and materials.



# Rose II

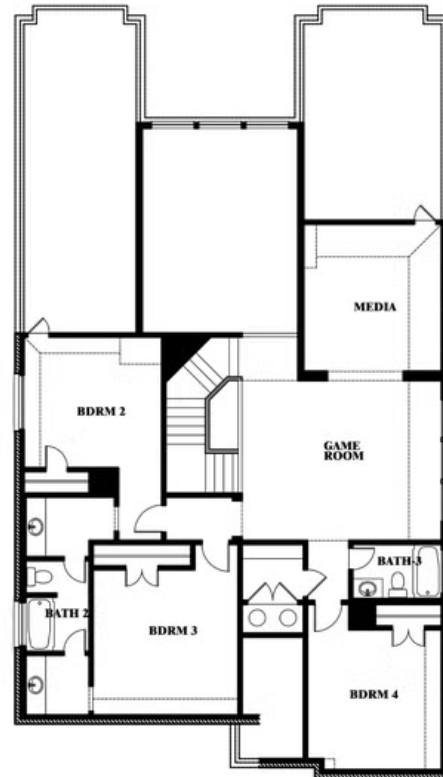
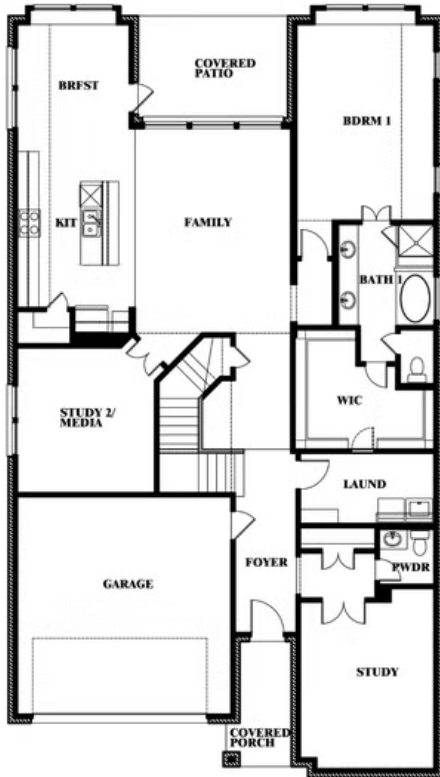
**ROSE II FLOOR PLAN**

## UNION PARK CLASSIC 60

1817 RUNNING CREEK TRAIL, LITTLE ELM, TX 76227



## Rose II



This brochure is for general informational purposes and is to be used as a guide only. Changes may be made during the development process and floorplans, dimensions, fixtures, fittings, finishes and specifications are subject to change without notice. Window placement, balcony configuration, wardrobe sizes and living areas may vary slightly within each plan type. EQUAL HOUSING OPPORTUNITY



Document generated Nov 21, 2024. Prices, plans, square footage, features and materials are subject to change at any time without notice and vary among communities. Listed prices are for informational purposes only, are not binding, and do not create any contractual obligation(s). The price of any home is dependent on numerous factors, all of which are unique to a specific home, and is not guaranteed until specified in a binding contract. Pricing of elevations and additional optional beds/baths vary per plan. Some plans require a premium homesite. Please ask the Community Manager for details. Renderings of homes are artist concepts and may not reflect exact colors and materials.



# Rose II

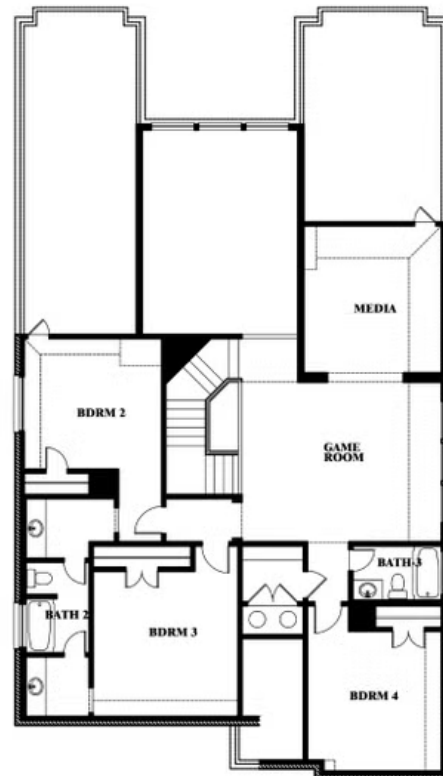
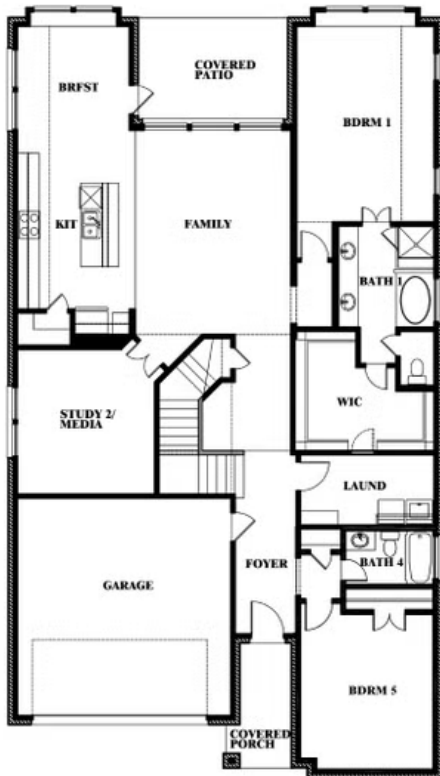
## UNION PARK CLASSIC 60

1817 RUNNING CREEK TRAIL, LITTLE ELM, TX 76227

**ROSE II FLOOR PLAN WITH OPTIONAL BED & BATH AT STUDY**



### Rose II Opt. Bed & Bath at Study



This brochure is for general informational purposes and is to be used as a guide only. Changes may be made during the development process and floorplans, dimensions, fixtures, fittings, finishes and specifications are subject to change without notice. Window placement, balcony configuration, wardrobe sizes and living areas may vary slightly within each plan type. EQUAL HOUSING OPPORTUNITY



Document generated Nov 21, 2024. Prices, plans, square footage, features and materials are subject to change at any time without notice and vary among communities. Listed prices are for informational purposes only, are not binding, and do not create any contractual obligation(s). The price of any home is dependent on numerous factors, all of which are unique to a specific home, and is not guaranteed until specified in a binding contract. Pricing of elevations and additional optional beds/baths vary per plan. Some plans require a premium homesite. Please ask the Community Manager for details. Renderings of homes are artist concepts and may not reflect exact colors and materials.