



# Carolina II

HOMES FROM  
**\$628,990**

CLASSIC SERIES

## UNION PARK CLASSIC 55

1817 RUNNING CREEK TRAIL, LITTLE ELM, TX 76227

**2,771**  
SQUARE FEET

**3**  
BEDROOMS

**3.0**  
BATHROOMS

**2**  
CAR GARAGE



**ELEVATION D**



**ELEVATION A**

ELEVATION A



**ELEVATION AS**

ELEVATION AS



**ELEVATION C**

ELEVATION C





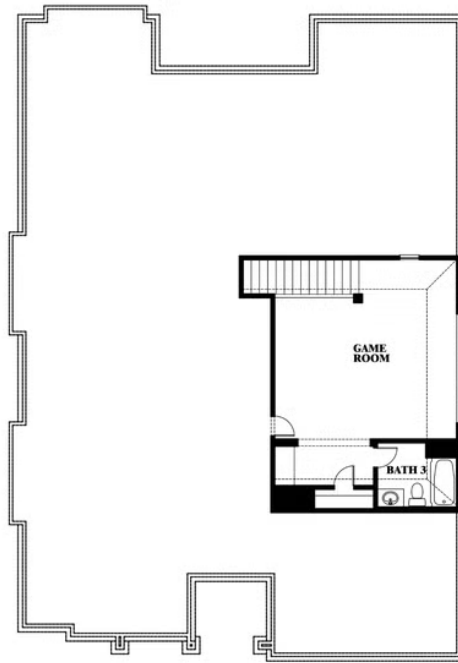
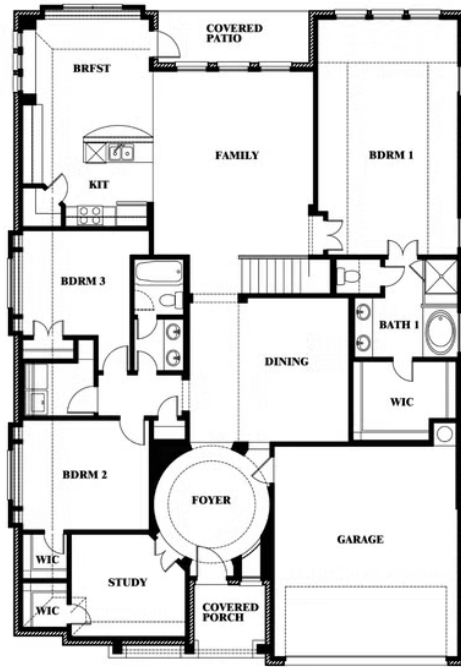
# Carolina II

## UNION PARK CLASSIC 55

1817 RUNNING CREEK TRAIL, LITTLE ELM, TX 76227



## Carolina II



This brochure is for general informational purposes and is to be used as a guide only. Changes may be made during the development process and floorplans, dimensions, fixtures, fittings, finishes and specifications are subject to change without notice. Window placement, balcony configuration, wardrobe sizes and living areas may vary slightly within each plan type. EQUAL HOUSING OPPORTUNITY





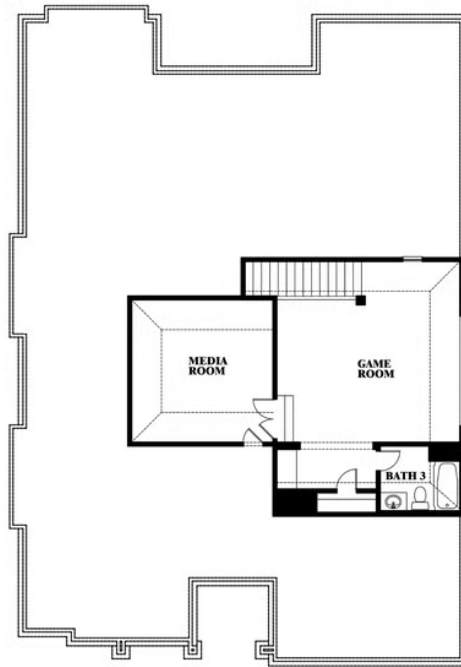
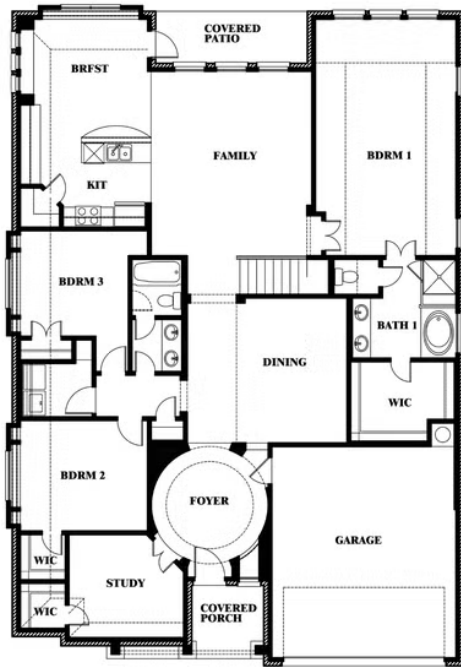
# Carolina II

## UNION PARK CLASSIC 55

1817 RUNNING CREEK TRAIL, LITTLE ELM, TX 76227



### Carolina II with Media Room



This brochure is for general informational purposes and is to be used as a guide only. Changes may be made during the development process and floorplans, dimensions, fixtures, fittings, finishes and specifications are subject to change without notice. Window placement, balcony configuration, wardrobe sizes and living areas may vary slightly within each plan type. EQUAL HOUSING OPPORTUNITY

