

# Rose III

CLASSIC SERIES

**GEORGETOWN AT KINGS FORT 60S**

4102 BERRY LANE, KAUFMAN, TX 75142

HOMES FROM

**\$463,990**

**3,557**  
SQUARE FEET

**5**  
BEDROOMS

**3.5**  
BATHROOMS

**2**  
CAR GARAGE



**ELEVATION A**



**ELEVATION AS**

ELEVATION AS



**ELEVATION B**

ELEVATION B



**ELEVATION C**

ELEVATION C



**ELEVATION D**

ELEVATION D

# Rose III

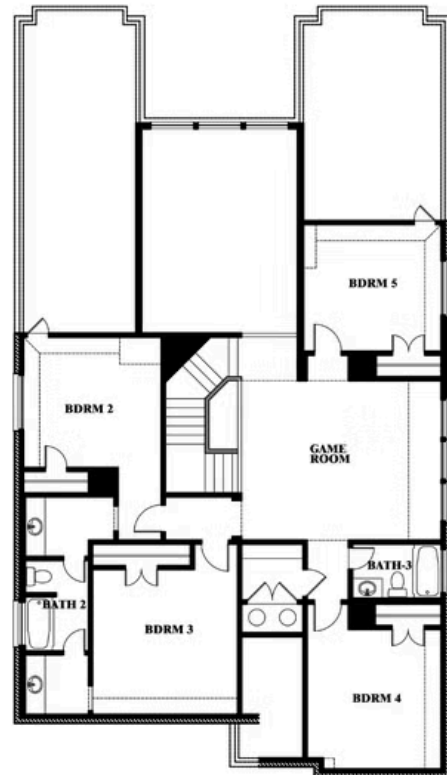
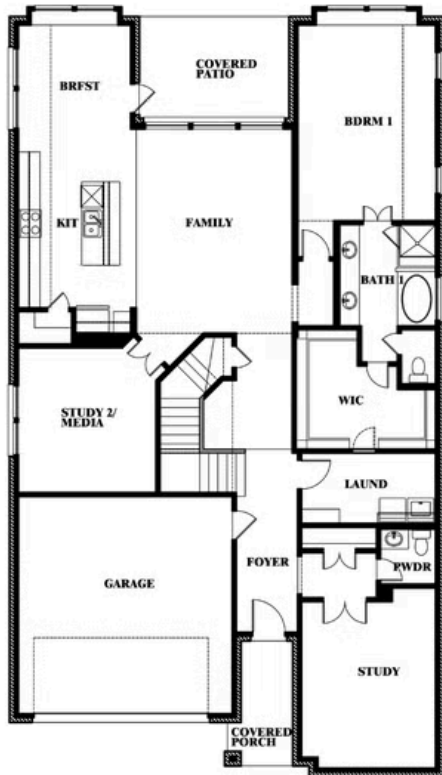
## ROSE III FLOOR PLAN

## GEORGETOWN AT KINGS FORT 60S

4102 BERRY LANE, KAUFMAN, TX 75142



## Rose III



This brochure is for general informational purposes and is to be used as a guide only. Changes may be made during the development process and floorplans, dimensions, fixtures, fittings, finishes and specifications are subject to change without notice. Window placement, balcony configuration, wardrobe sizes and living areas may vary slightly within each plan type. EQUAL HOUSING OPPORTUNITY

# Rose III

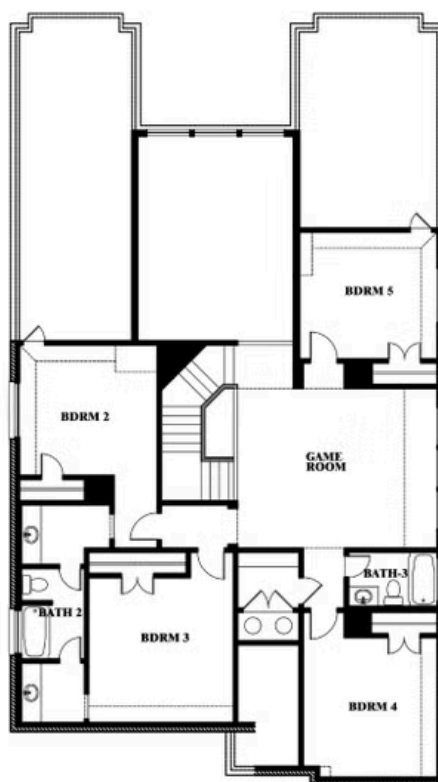
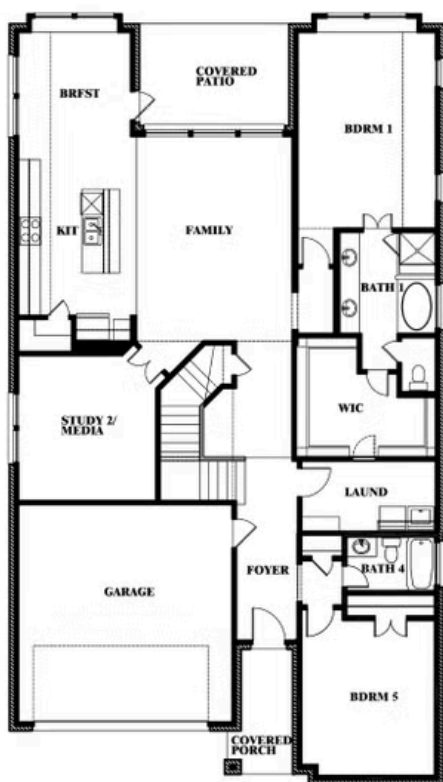
ROSE III FLOOR PLAN WITH OPTIONAL BED & BATH AT STUDY

**GEORGETOWN AT KINGS FORT 60S**

4102 BERRY LANE, KAUFMAN, TX 75142



**Rose III**  
Opt. Bed & Bath at Study



This brochure is for general informational purposes and is to be used as a guide only. Changes may be made during the development process and floorplans, dimensions, fixtures, fittings, finishes and specifications are subject to change without notice. Window placement, balcony configuration, wardrobe sizes and living areas may vary slightly within each plan type. EQUAL HOUSING OPPORTUNITY