



# Hawthorne

HOMES FROM  
**\$366,990**

CLASSIC SERIES

**GEORGETOWN AT KINGS FORT 50S**

4102 BERRY LANE, KAUFMAN, TX 75142

**2,235**  
SQUARE FEET

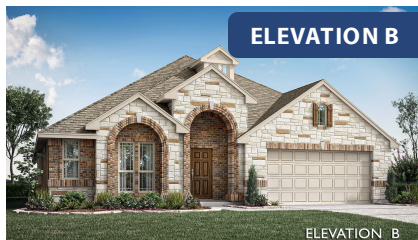
**4**  
BEDROOMS

**2.0**  
BATHROOMS

**2**  
CAR GARAGE

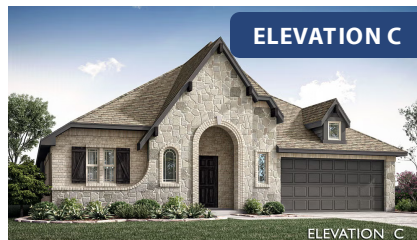


**ELEVATION A**



**ELEVATION B**

ELEVATION B



**ELEVATION C**

ELEVATION C





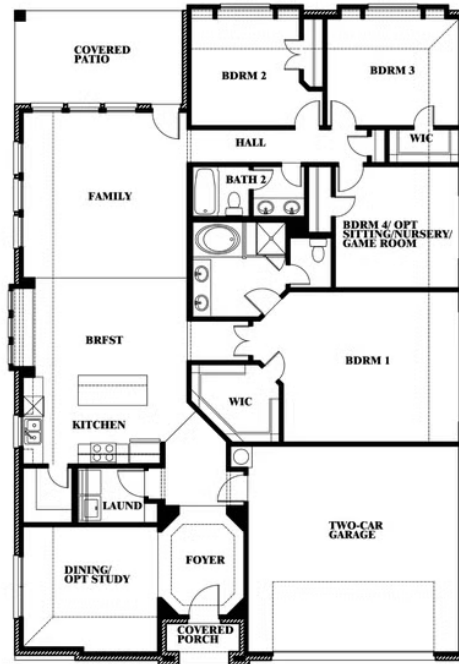
# Hawthorne

## GEORGETOWN AT KINGS FORT 50S

4102 BERRY LANE, KAUFMAN, TX 75142



## Hawthorne



This brochure is for general informational purposes and is to be used as a guide only. Changes may be made during the development process and floorplans, dimensions, fixtures, fittings, finishes and specifications are subject to change without notice. Window placement, balcony configuration, wardrobe sizes and living areas may vary slightly within each plan type. EQUAL HOUSING OPPORTUNITY





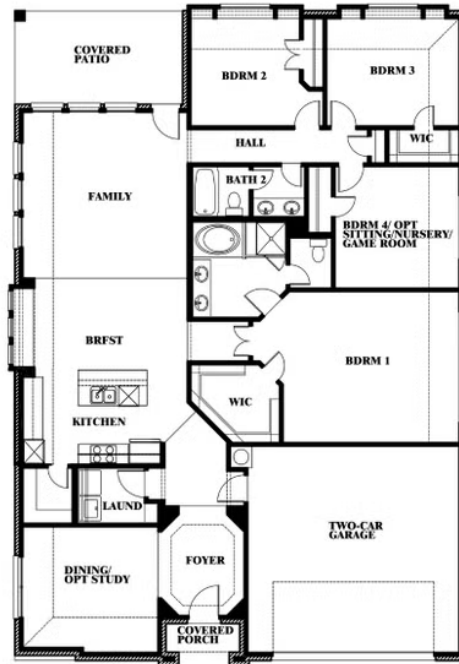
# Hawthorne

## GEORGETOWN AT KINGS FORT 50S

4102 BERRY LANE, KAUFMAN, TX 75142



### Hawthorne Opt. Deluxe Kitchen



This brochure is for general informational purposes and is to be used as a guide only. Changes may be made during the development process and floorplans, dimensions, fixtures, fittings, finishes and specifications are subject to change without notice. Window placement, balcony configuration, wardrobe sizes and living areas may vary slightly within each plan type. EQUAL HOUSING OPPORTUNITY

