



Violet II

HOMES FROM
\$474,990

CLASSIC SERIES

WILDFLOWER RANCH 60-65

1013 CANUELA WAY, JUSTIN, TX 76247

2,591
SQUARE FEET

3
BEDROOMS

2.5
BATHROOMS

2
CAR GARAGE



ELEVATION A



ELEVATION AS

ELEVATION AS



ELEVATION B

ELEVATION B



ELEVATION C

ELEVATION C



ELEVATION D

ELEVATION D





Violet II

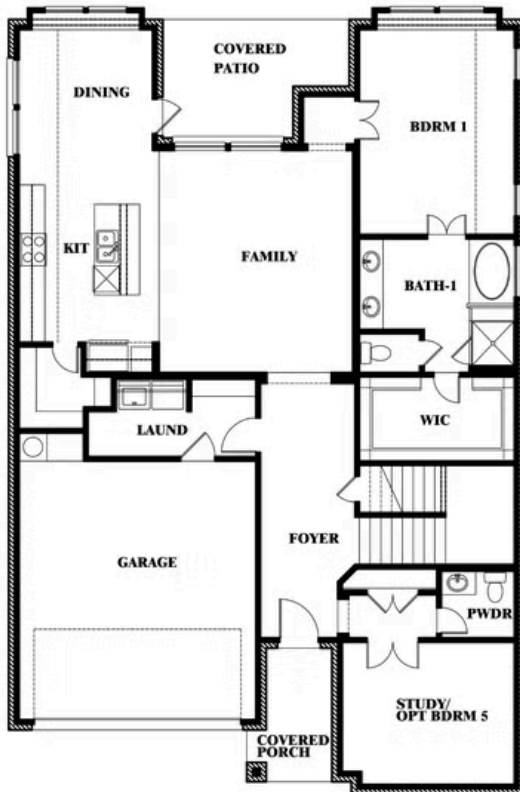
VIOLET II FLOOR PLAN

WILDFLOWER RANCH 60-65

1013 CANUELA WAY, JUSTIN, TX 76247



Violet II



This brochure is for general informational purposes and is to be used as a guide only. Changes may be made during the development process and floorplans, dimensions, fixtures, fittings, finishes and specifications are subject to change without notice. Window placement, balcony configuration, wardrobe sizes and living areas may vary slightly within each plan type. EQUAL HOUSING OPPORTUNITY





Violet II

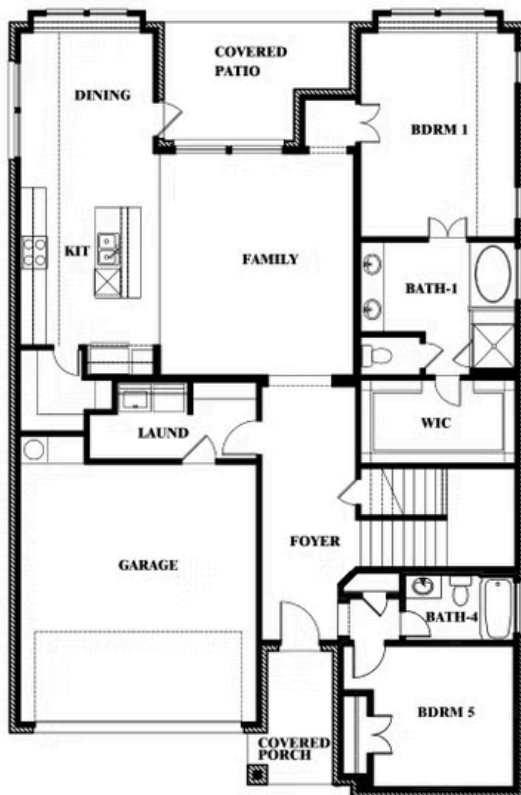
WILDFLOWER RANCH 60-65

1013 CANUELA WAY, JUSTIN, TX 76247

VIOLET II FLOOR PLAN WITH OPTIONAL BEDROOM AT STUDY



Violet II Opt. Bed 5 & Bath 4 at Study



This brochure is for general informational purposes and is to be used as a guide only. Changes may be made during the development process and floorplans, dimensions, fixtures, fittings, finishes and specifications are subject to change without notice. Window placement, balcony configuration, wardrobe sizes and living areas may vary slightly within each plan type. EQUAL HOUSING OPPORTUNITY

