

Cypress II

CLASSIC SERIES

TIMBERBROOK 3B-4A

206 OAKCREST DRIVE, JUSTIN, TX 76247

HOMES FROM

\$471,990

2,454
SQUARE FEET

4
BEDROOMS

3.0
BATHROOMS

2
CAR GARAGE



ELEVATION F



ELEVATION B

ELEVATION B



ELEVATION C

ELEVATION C



ELEVATION D

ELEVATION D



ELEVATION E

ELEVATION E

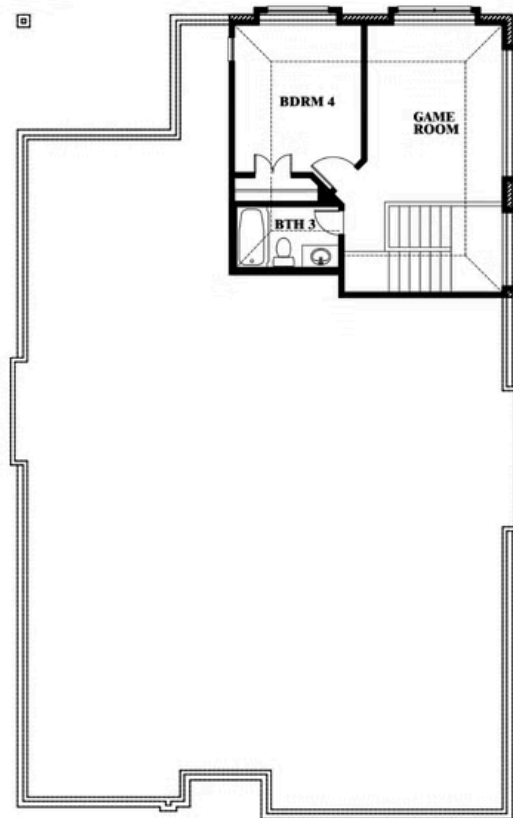
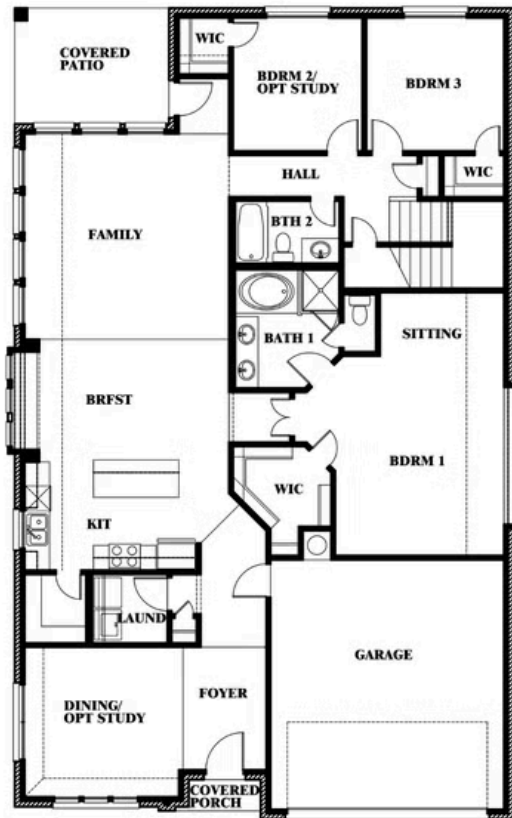
Cypress II

TIMBERBROOK 3B-4A

206 OAKCREST DRIVE, JUSTIN, TX 76247



Cypress II



This brochure is for general informational purposes and is to be used as a guide only. Changes may be made during the development process and floorplans, dimensions, fixtures, fittings, finishes and specifications are subject to change without notice. Window placement, balcony configuration, wardrobe sizes and living areas may vary slightly within each plan type. **EQUAL HOUSING OPPORTUNITY**