



# 4344 Sunflower Foundry Street

JOSHUA, TX 76058

**SILO MILLS**

CYPRESS FLOOR PLAN

PRICED AT

~~\$396,303~~ **\$354,990**

**2042**  
SQUARE FEET

**4**  
BEDROOMS

**2.0**  
BATHROOMS

**2**  
CAR GARAGE



The Cypress plan is a one-story with an open & functional layout offering 4 bedrooms, 2 baths, a Study with Glass French Doors, and a 2-car garage. This home will have attractive curb appeal with a Stone exterior accented by brick, a custom 8' front door, gutters, and brand-new landscaping. Open & bright Family room flows into the kitchen and dining space, with windows lining the entire room and a Tile 'To Mantel' Fireplace added. At the head of the room, the Kitchen offers a large center island workspace with Granite countertops, SS appliances, and upgraded backsplash tiles. Wood-look Tile flooring in all presentation areas. Other thoughtful details include a built-in Buffet at the Breakfast Nook, a Covered Rear Patio, blinds, a built-in gas stub, an irrigation system, and a fully fenced yard on an oversized lot with metal and stained fencing. Find out more today by calling or visiting Bloomfield at Silo Mills.





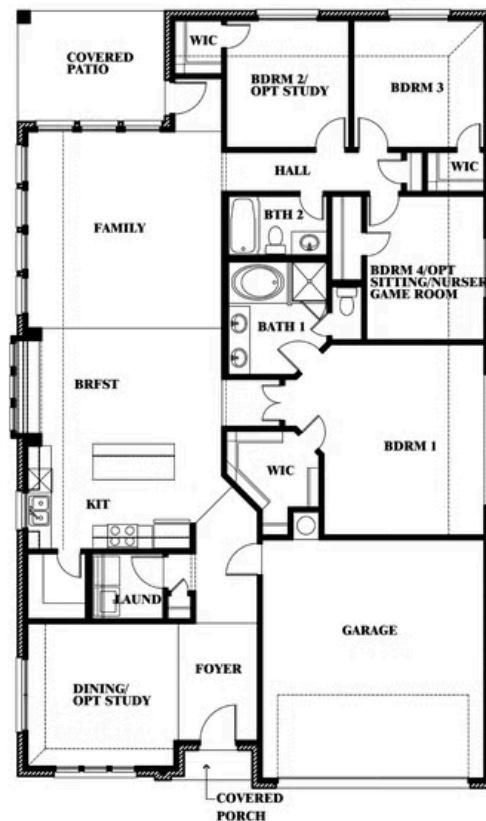
# 4344 Sunflower Foundry Street

JOSHUA, TX 76058

CYPRESS FLOOR PLAN



Cypress



This brochure is for general informational purposes and is to be used as a guide only. Changes may be made during the development process and floorplans, dimensions, fixtures, fittings, finishes and specifications are subject to change without notice. Window placement, balcony configuration, wardrobe sizes and living areas may vary slightly within each plan type. EQUAL HOUSING OPPORTUNITY