



# Primrose FE VI

HOMES FROM  
**\$584,990**

CLASSIC SERIES

**SILO MILLS CLASSIC 70**

4425 SWEET ACRES AVE, JOSHUA, TX 76058

**4,065**  
SQUARE FEET

**5**  
BEDROOMS

**4.5**  
BATHROOMS

**3**  
CAR GARAGE



**ELEVATION A**



**ELEVATION B**

ELEVATION B



**ELEVATION C**

ELEVATION C





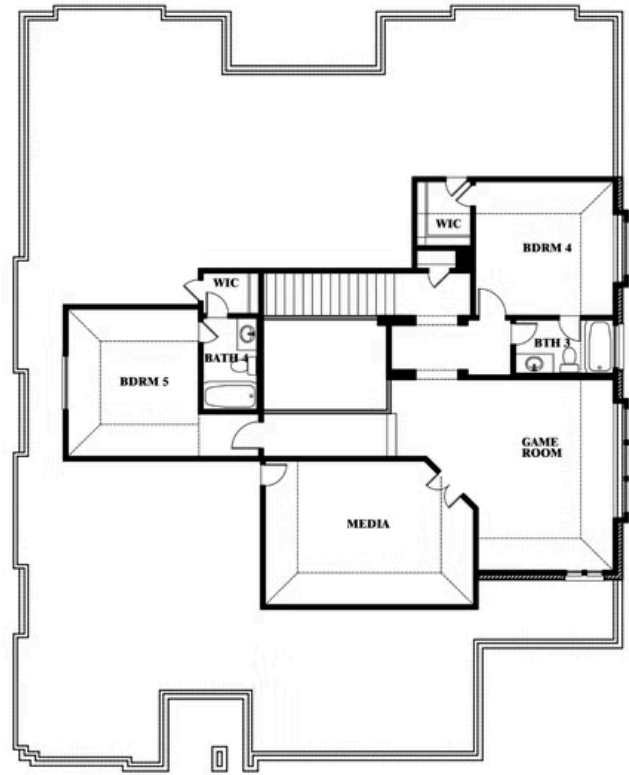
# Primrose FE VI

## SILO MILLS CLASSIC 70

4425 SWEET ACRES AVE, JOSHUA, TX 76058



## Primrose FE VI



This brochure is for general informational purposes and is to be used as a guide only. Changes may be made during the development process and floorplans, dimensions, fixtures, fittings, finishes and specifications are subject to change without notice. Window placement, balcony configuration, wardrobe sizes and living areas may vary slightly within each plan type. EQUAL HOUSING OPPORTUNITY

