



Primrose FE V

HOMES FROM
\$552,990

CLASSIC SERIES

SILO MILLS CLASSIC 70

4425 SWEET ACRES AVE, JOSHUA, TX 76058

3,733
SQUARE FEET

4
BEDROOMS

3.5
BATHROOMS

3
CAR GARAGE



ELEVATION A



ELEVATION B

ELEVATION B



ELEVATION C

ELEVATION C





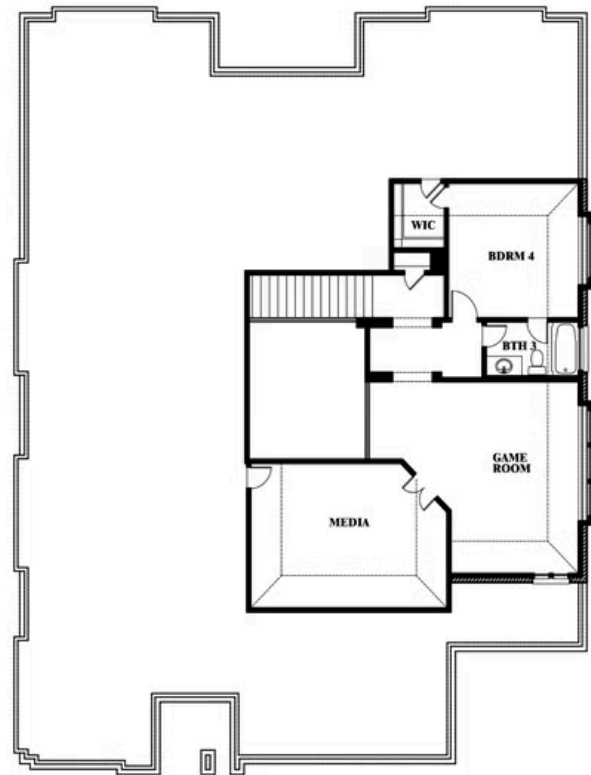
Primrose FE V

SILO MILLS CLASSIC 70

4425 SWEET ACRES AVE, JOSHUA, TX 76058



Primrose FE V



This brochure is for general informational purposes and is to be used as a guide only. Changes may be made during the development process and floorplans, dimensions, fixtures, fittings, finishes and specifications are subject to change without notice. Window placement, balcony configuration, wardrobe sizes and living areas may vary slightly within each plan type. EQUAL HOUSING OPPORTUNITY

