



Dogwood

HOMES FROM
\$339,990

CLASSIC SERIES

SILO MILLS CLASSIC 50

4425 SWEET ACRES AVE, JOSHUA, TX 76058

1,840
SQUARE FEET

3
BEDROOMS

2.0
BATHROOMS

2
CAR GARAGE



ELEVATION ES



ELEVATION A



ELEVATION C



ELEVATION FS



ELEVATION G



ELEVATION GS





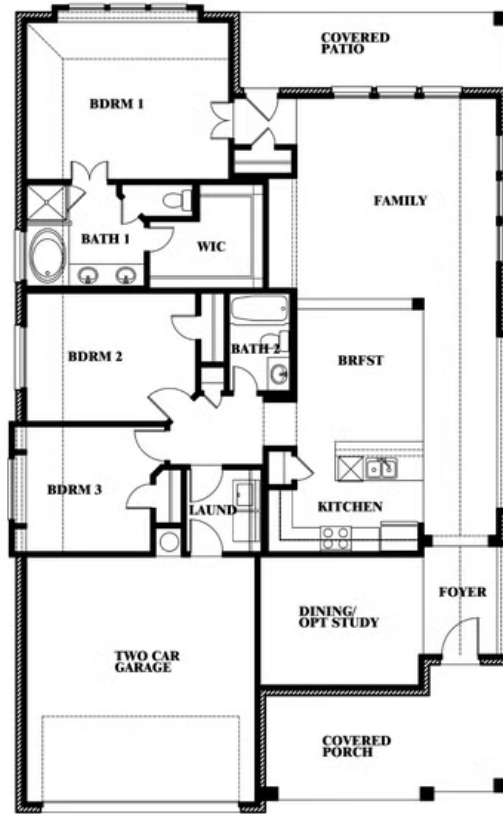
Dogwood

SILO MILLS CLASSIC 50

4425 SWEET ACRES AVE, JOSHUA, TX 76058



Dogwood



This brochure is for general informational purposes and is to be used as a guide only. Changes may be made during the development process and floorplans, dimensions, fixtures, fittings, finishes and specifications are subject to change without notice. Window placement, balcony configuration, wardrobe sizes and living areas may vary slightly within each plan type. EQUAL HOUSING OPPORTUNITY

