



Dewberry II

HOMES FROM
\$463,990

CLASSIC SERIES

MOCKINGBIRD HILLS

15 HARRIER STREET, JOSHUA, TX 76058

3,026
SQUARE FEET

4
BEDROOMS

2.5
BATHROOMS

2
CAR GARAGE



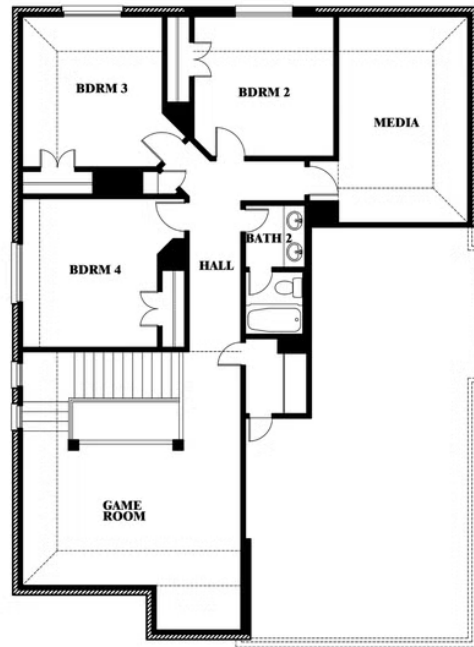
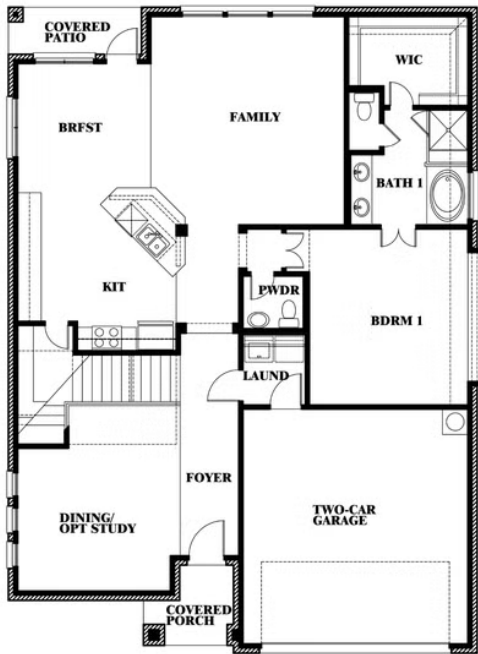


Dewberry II

MOCKINGBIRD HILLS
15 HARRIER STREET, JOSHUA, TX 76058



Dewberry II



This brochure is for general informational purposes and is to be used as a guide only. Changes may be made during the development process and floorplans, dimensions, fixtures, fittings, finishes and specifications are subject to change without notice. Window placement, balcony configuration, wardrobe sizes and living areas may vary slightly within each plan type. EQUAL HOUSING OPPORTUNITY

