



Primrose FE VI

HOMES FROM
\$589,990

CLASSIC SERIES

ABE'S LANDING

3201 BOAT LANDING TRAIL, GRANBURY, TX 76049

Only Available in Phase 4B

4,065
SQUARE FEET

5
BEDROOMS

4.5
BATHROOMS

3
CAR GARAGE



ELEVATION A



ELEVATION B



ELEVATION C





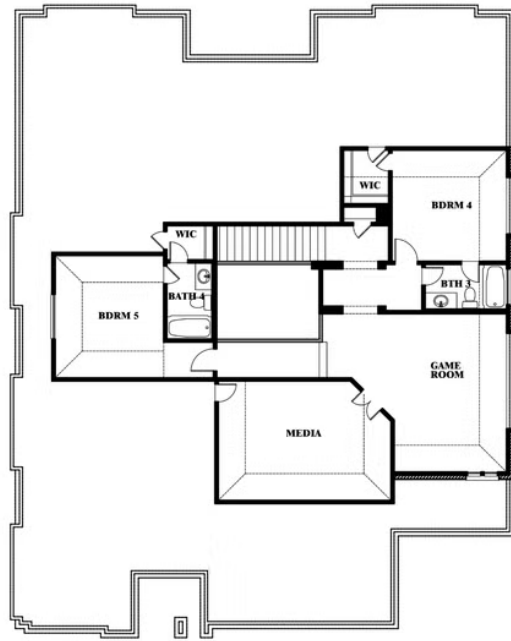
Primrose FE VI

ABE'S LANDING

3201 BOAT LANDING TRAIL, GRANBURY, TX 76049



Primrose FE VI



This brochure is for general informational purposes and is to be used as a guide only. Changes may be made during the development process and floorplans, dimensions, fixtures, fittings, finishes and specifications are subject to change without notice. Window placement, balcony configuration, wardrobe sizes and living areas may vary slightly within each plan type. EQUAL HOUSING OPPORTUNITY

