



# Primrose FE V

HOMES FROM  
**\$561,990**

CLASSIC SERIES

## ABE'S LANDING

3201 BOAT LANDING TRAIL, GRANBURY, TX 76049

**Only Available in Phase 4B**

**3,733**  
SQUARE FEET

**4**  
BEDROOMS

**3.5**  
BATHROOMS

**3**  
CAR GARAGE



**ELEVATION A**



**ELEVATION B**

ELEVATION B



**ELEVATION C**

ELEVATION C





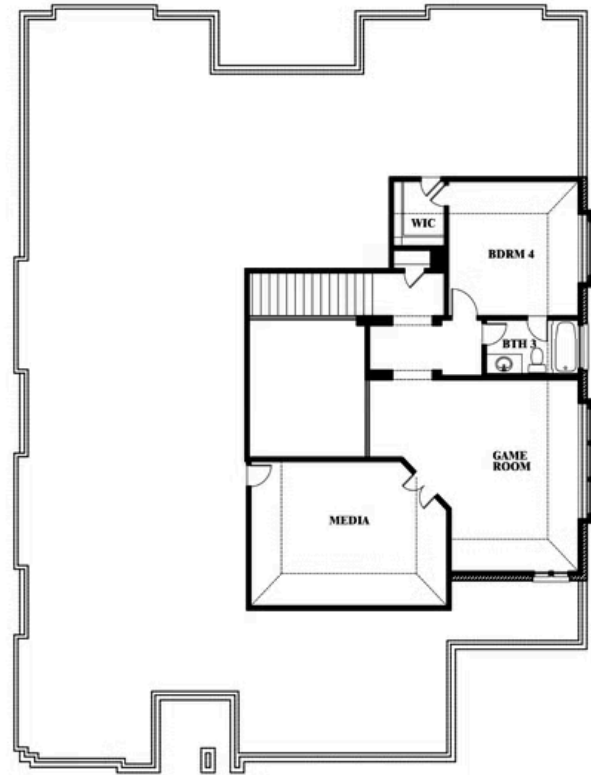
# Primrose FE V

## ABE'S LANDING

3201 BOAT LANDING TRAIL, GRANBURY, TX 76049



## Primrose FE V



This brochure is for general informational purposes and is to be used as a guide only. Changes may be made during the development process and floorplans, dimensions, fixtures, fittings, finishes and specifications are subject to change without notice. Window placement, balcony configuration, wardrobe sizes and living areas may vary slightly within each plan type. EQUAL HOUSING OPPORTUNITY

