



Rose III

HOMES FROM
\$510,990

CLASSIC SERIES

COPPER CREEK

8724 LANDERGIN MESA DRIVE, FORT WORTH, TX 76131

3,557
SQUARE FEET

5
BEDROOMS

3.5
BATHROOMS

2
CAR GARAGE



ELEVATION A



ELEVATION AS

ELEVATION AS



ELEVATION B

ELEVATION B



ELEVATION C

ELEVATION C



ELEVATION D

ELEVATION D





Rose III

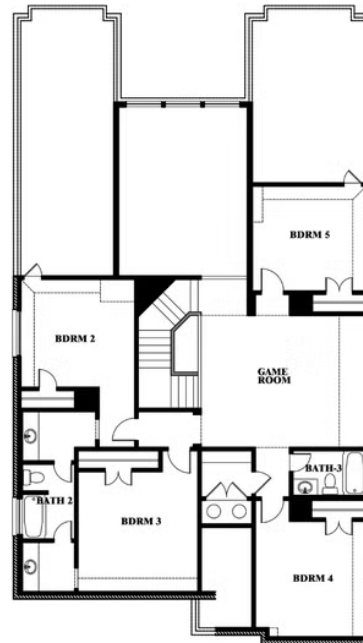
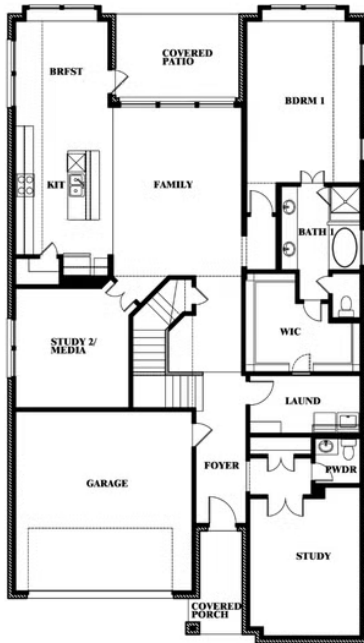
ROSE III FLOOR PLAN

COPPER CREEK

8724 LANDERGIN MESA DRIVE, FORT WORTH, TX 76131



Rose III



This brochure is for general informational purposes and is to be used as a guide only. Changes may be made during the development process and floorplans, dimensions, fixtures, fittings, finishes and specifications are subject to change without notice. Window placement, balcony configuration, wardrobe sizes and living areas may vary slightly within each plan type. EQUAL HOUSING OPPORTUNITY





Rose III

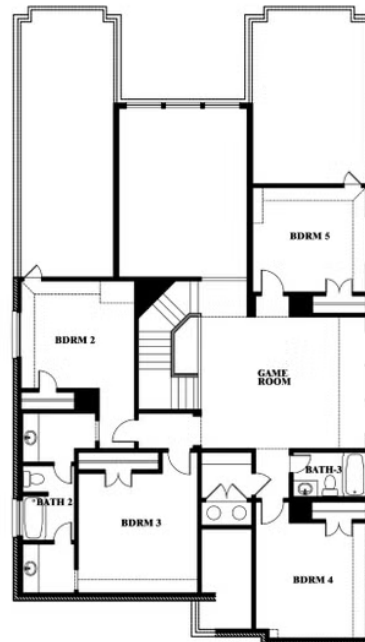
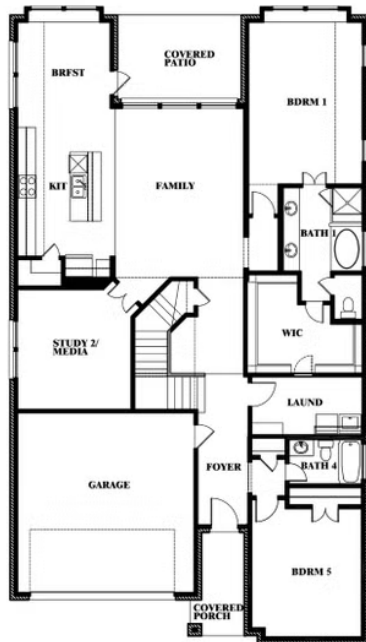
COPPER CREEK

8724 LANDERGIN MESA DRIVE, FORT WORTH, TX 76131

ROSE III FLOOR PLAN WITH OPTIONAL BED & BATH AT STUDY



Rose III
Opt. Bed & Bath at Study



This brochure is for general informational purposes and is to be used as a guide only. Changes may be made during the development process and floorplans, dimensions, fixtures, fittings, finishes and specifications are subject to change without notice. Window placement, balcony configuration, wardrobe sizes and living areas may vary slightly within each plan type. EQUAL HOUSING OPPORTUNITY

