



# Violet IV

CLASSIC SERIES

## HOMESTEAD AT DANIEL FARMS PHASE 2

941 PALMER LANE, DESOTO, TX 75115

HOMES FROM  
**\$509,990**

**2,838**  
SQUARE FEET

**4**  
BEDROOMS

**3.5**  
BATHROOMS

**2**  
CAR GARAGE



**ELEVATION A**



**ELEVATION AS**

ELEVATION AS



**ELEVATION B**

ELEVATION B



**ELEVATION C**

ELEVATION C



**ELEVATION D**

ELEVATION D





# Violet IV

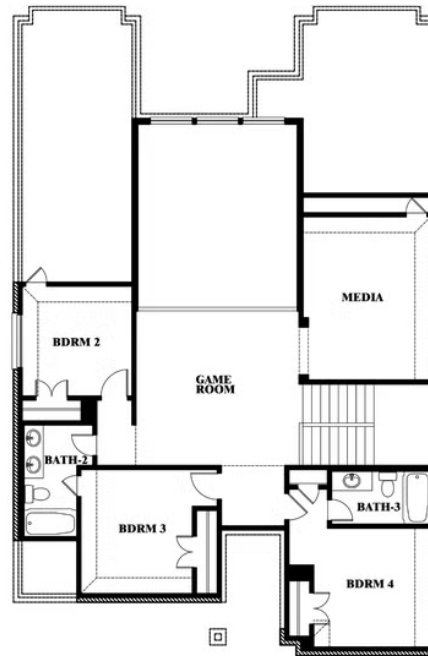
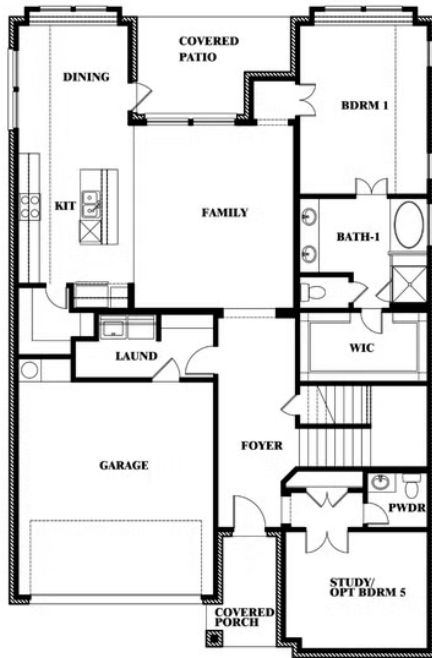
VIOLET IV FLOOR PLAN

## HOMESTEAD AT DANIEL FARMS PHASE 2

941 PALMER LANE, DESOTO, TX 75115



### Violet IV



This brochure is for general informational purposes and is to be used as a guide only. Changes may be made during the development process and floorplans, dimensions, fixtures, fittings, finishes and specifications are subject to change without notice. Window placement, balcony configuration, wardrobe sizes and living areas may vary slightly within each plan type. EQUAL HOUSING OPPORTUNITY





# Violet IV

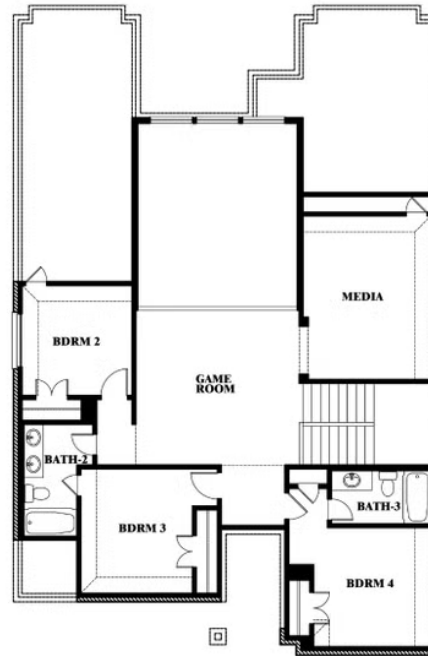
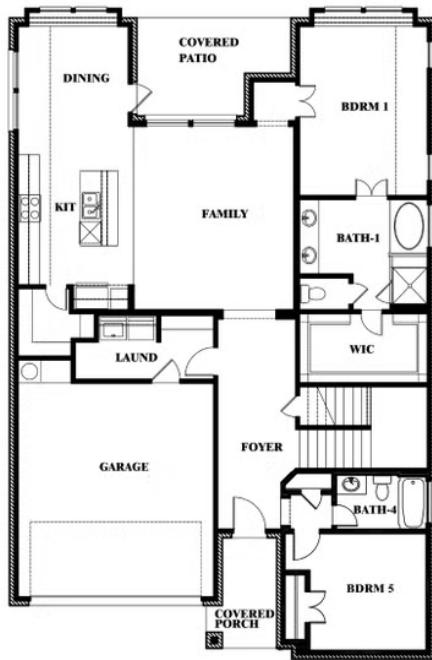
## HOMESTEAD AT DANIEL FARMS PHASE 2

941 PALMER LANE, DESOTO, TX 75115

**VIOLET IV FLOOR PLAN WITH OPTIONAL BEDROOM AT STUDY**



**Violet IV**  
Opt. Bed 5 & Bath 4 at Study



This brochure is for general informational purposes and is to be used as a guide only. Changes may be made during the development process and floorplans, dimensions, fixtures, fittings, finishes and specifications are subject to change without notice. Window placement, balcony configuration, wardrobe sizes and living areas may vary slightly within each plan type. EQUAL HOUSING OPPORTUNITY

