



# Primrose II

HOMES FROM  
**\$575,990**

CLASSIC SERIES

**HOMESTEAD AT DANIEL FARMS PHASE 2**

941 PALMER LANE, DESOTO, TX 75115

**3,299**  
SQUARE FEET

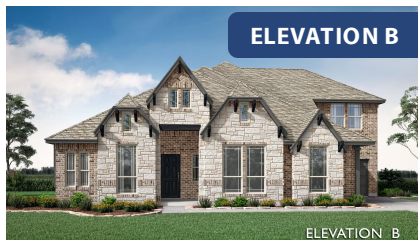
**3**  
BEDROOMS

**3.5**  
BATHROOMS

**3**  
CAR GARAGE



**ELEVATION A**



**ELEVATION B**

ELEVATION B



**ELEVATION C**

ELEVATION C



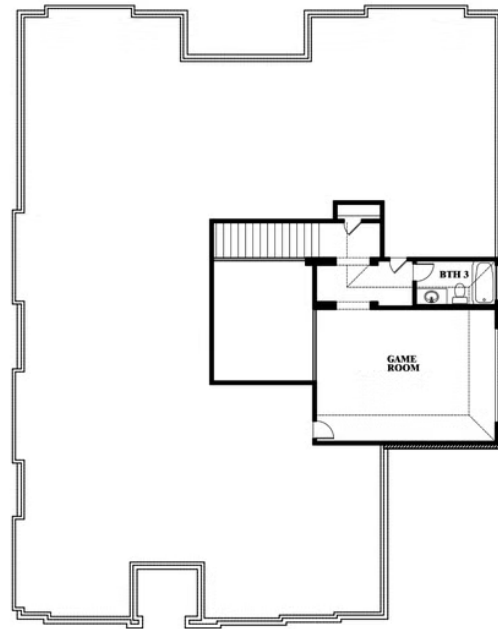


# Primrose II

**HOMESTEAD AT DANIEL FARMS PHASE 2**  
941 PALMER LANE, DESOTO, TX 75115



## Primrose II



This brochure is for general informational purposes and is to be used as a guide only. Changes may be made during the development process and floorplans, dimensions, fixtures, fittings, finishes and specifications are subject to change without notice. Window placement, balcony configuration, wardrobe sizes and living areas may vary slightly within each plan type. EQUAL HOUSING OPPORTUNITY

