



Violet II

HOMES FROM
\$465,990

CLASSIC SERIES

CREEKS OF HOMESTEAD

941 PALMER LANE, DESOTO, TX 75115

2,591
SQUARE FEET

3
BEDROOMS

2.5
BATHROOMS

2
CAR GARAGE



ELEVATION A



ELEVATION AS

ELEVATION AS



ELEVATION B

ELEVATION B



ELEVATION C

ELEVATION C



ELEVATION D

ELEVATION D





Violet II

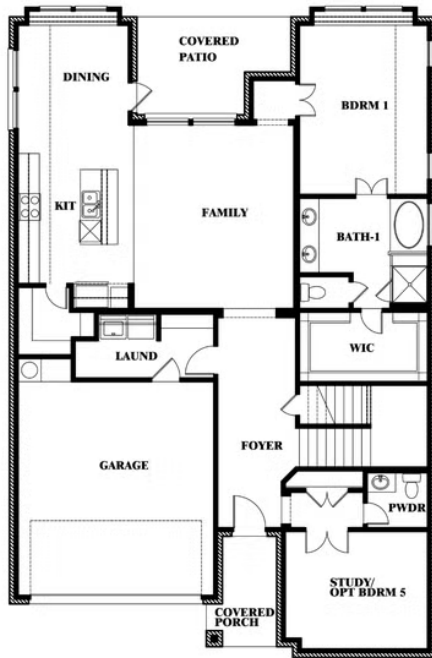
VIOLET II FLOOR PLAN

CREEKS OF HOMESTEAD

941 PALMER LANE, DESOTO, TX 75115



Violet II



This brochure is for general informational purposes and is to be used as a guide only. Changes may be made during the development process and floorplans, dimensions, fixtures, fittings, finishes and specifications are subject to change without notice. Window placement, balcony configuration, wardrobe sizes and living areas may vary slightly within each plan type. EQUAL HOUSING OPPORTUNITY





Violet II

CREEKS OF HOMESTEAD

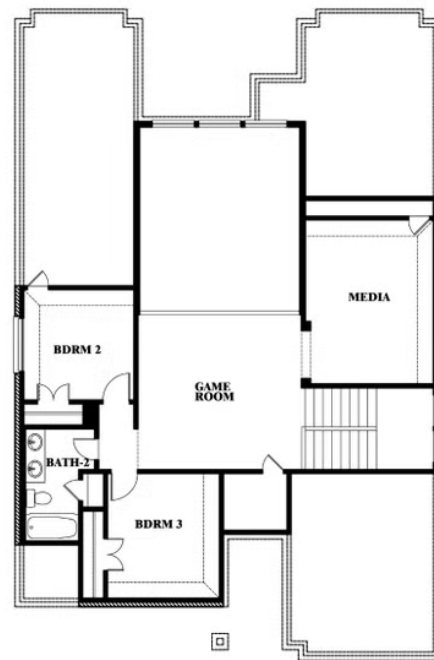
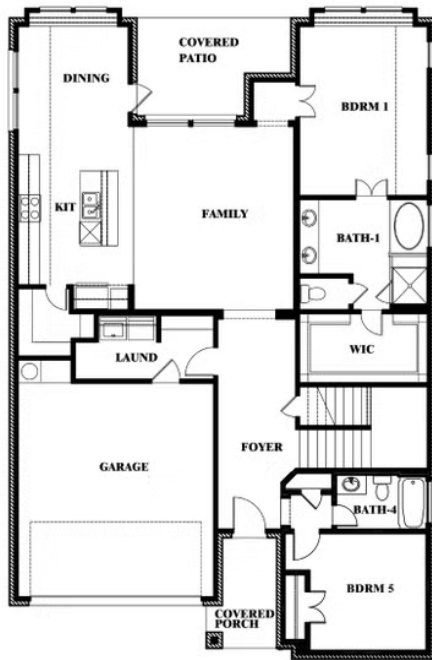
941 PALMER LANE, DESOTO, TX 75115

VIOLET II FLOOR PLAN WITH OPTIONAL BEDROOM AT STUDY



Violet II

Opt. Bed 5 & Bath 4 at Study



This brochure is for general informational purposes and is to be used as a guide only. Changes may be made during the development process and floorplans, dimensions, fixtures, fittings, finishes and specifications are subject to change without notice. Window placement, balcony configuration, wardrobe sizes and living areas may vary slightly within each plan type. EQUAL HOUSING OPPORTUNITY

