



# Primrose FE VI

HOMES FROM  
**\$741,990**

CLASSIC SERIES

**GLENWOOD MEADOWS**

3017 CREEKHOLLOW COURT, DENTON, TX 76226

**4,065**  
SQUARE FEET

**6**  
BEDROOMS

**4.5**  
BATHROOMS

**2**  
CAR GARAGE



**ELEVATION A**



**ELEVATION B**

ELEVATION B



**ELEVATION C**

ELEVATION C





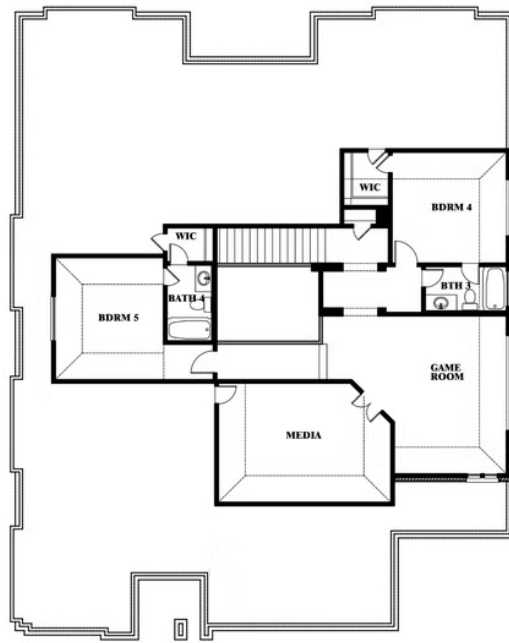
# Primrose FE VI

## GLENWOOD MEADOWS

3017 CREEKHOLLOW COURT, DENTON, TX 76226



### Primrose FE VI



This brochure is for general informational purposes and is to be used as a guide only. Changes may be made during the development process and floorplans, dimensions, fixtures, fittings, finishes and specifications are subject to change without notice. Window placement, balcony configuration, wardrobe sizes and living areas may vary slightly within each plan type. EQUAL HOUSING OPPORTUNITY

