



# Hawthorne II

CLASSIC SERIES

## COUNTRY LAKES

301 RIVER MEADOWS LANE, DENTON, TX 76226

HOMES FROM

**\$501,990 - \$517,990**

**2,752**  
SQUARE FEET

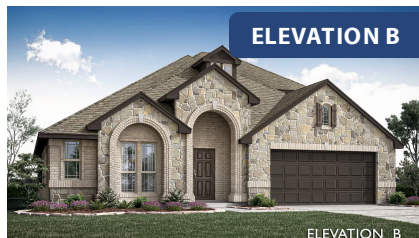
**4**  
BEDROOMS

**3.0**  
BATHROOMS

**2**  
CAR GARAGE

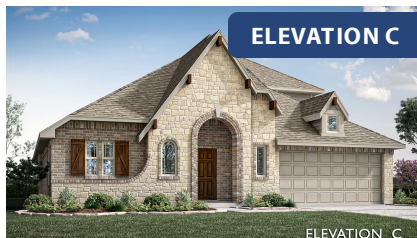


**ELEVATION A**



**ELEVATION B**

ELEVATION B



**ELEVATION C**

ELEVATION C





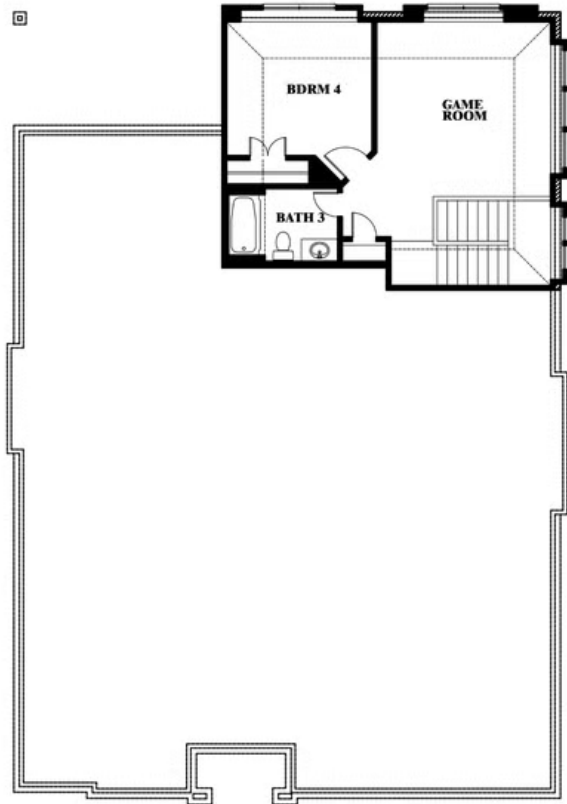
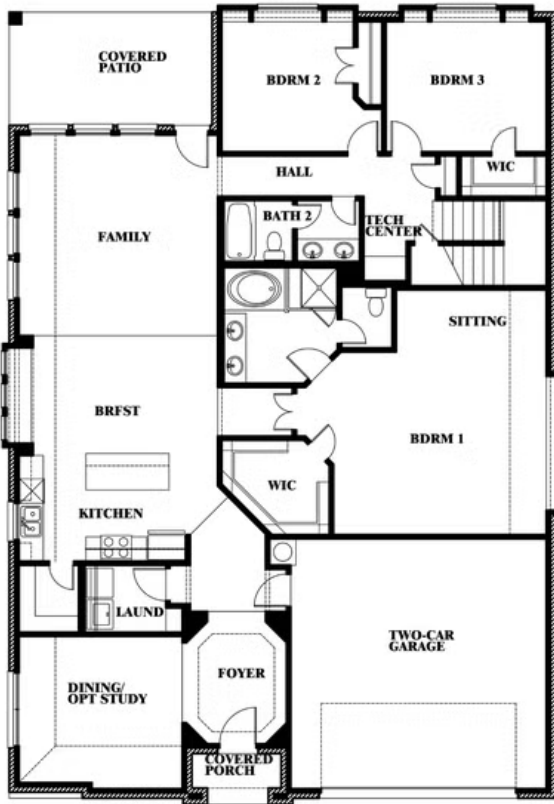
# Hawthorne II

## COUNTRY LAKES

301 RIVER MEADOWS LANE, DENTON, TX 76226



## Hawthorne II



This brochure is for general informational purposes and is to be used as a guide only. Changes may be made during the development process and floorplans, dimensions, fixtures, fittings, finishes and specifications are subject to change without notice. Window placement, balcony configuration, wardrobe sizes and living areas may vary slightly within each plan type. **EQUAL HOUSING OPPORTUNITY**



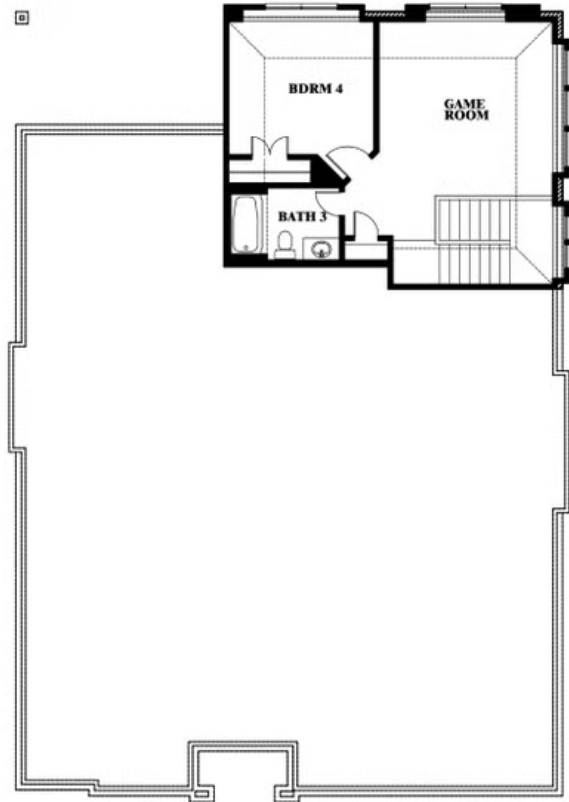
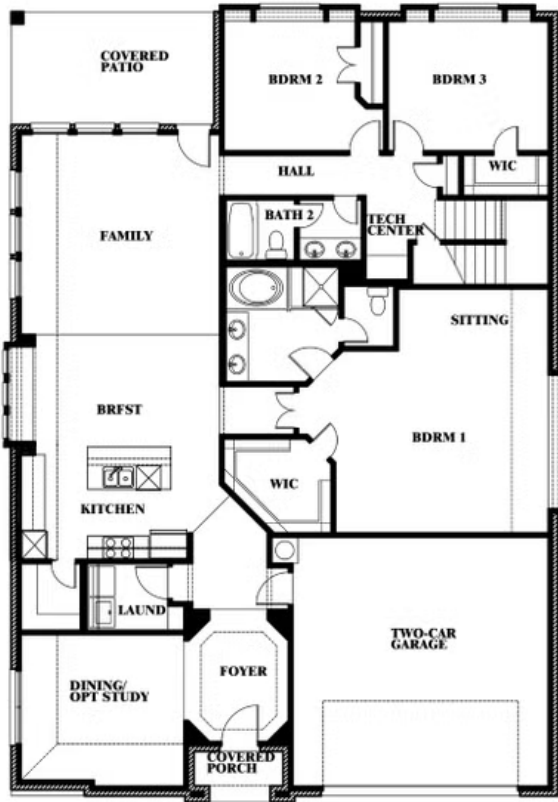
# Hawthorne II

## COUNTRY LAKES

301 RIVER MEADOWS LANE, DENTON, TX 76226



## Hawthorne II Opt. Deluxe Kitchen



This brochure is for general informational purposes and is to be used as a guide only. Changes may be made during the development process and floorplans, dimensions, fixtures, fittings, finishes and specifications are subject to change without notice. Window placement, balcony configuration, wardrobe sizes and living areas may vary slightly within each plan type. **EQUAL HOUSING OPPORTUNITY**

