



Primrose FE IV

HOMES FROM
\$619,990

CLASSIC SERIES

COUNTRY LAKES CLASSIC 60

301 RIVER MEADOWS LANE, DENTON, TX 76226

3,543
SQUARE FEET

4
BEDROOMS

3.5
BATHROOMS

3
CAR GARAGE



ELEVATION A



ELEVATION B

ELEVATION B



ELEVATION C

ELEVATION C



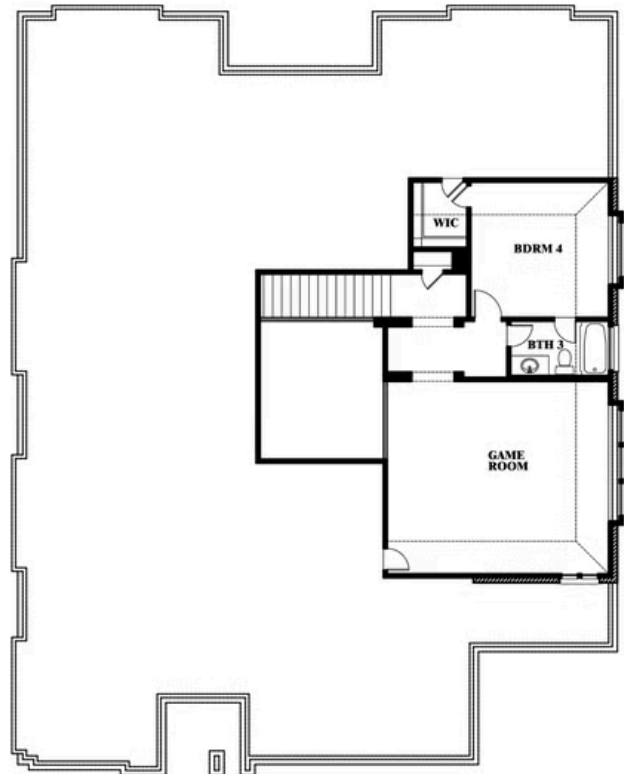


Primrose FE IV

COUNTRY LAKES CLASSIC 60
301 RIVER MEADOWS LANE, DENTON, TX 76226



Primrose FE IV



This brochure is for general informational purposes and is to be used as a guide only. Changes may be made during the development process and floorplans, dimensions, fixtures, fittings, finishes and specifications are subject to change without notice. Window placement, balcony configuration, wardrobe sizes and living areas may vary slightly within each plan type. EQUAL HOUSING OPPORTUNITY

