



# Primrose FE

HOMES FROM  
**\$553,990**

CLASSIC SERIES

**COUNTRY LAKES CLASSIC 60**

301 RIVER MEADOWS LANE, DENTON, TX 76226

**2,775**  
SQUARE FEET

**3**  
BEDROOMS

**2.5**  
BATHROOMS

**3**  
CAR GARAGE



**ELEVATION A**



**ELEVATION B**



**ELEVATION C**



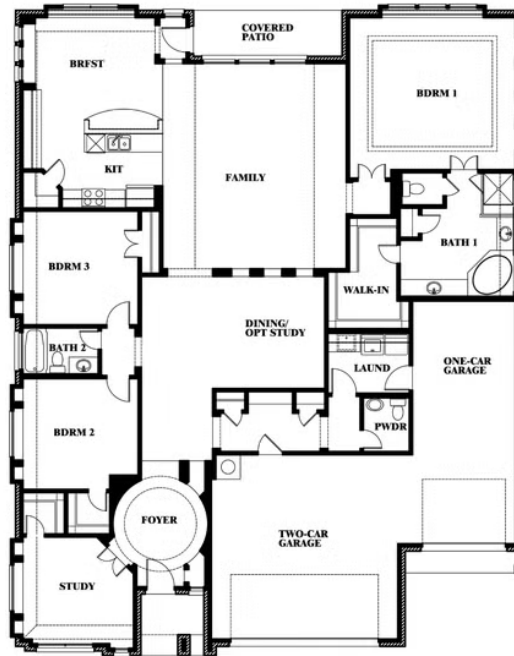


# Primrose FE

**COUNTRY LAKES CLASSIC 60**  
301 RIVER MEADOWS LANE, DENTON, TX 76226



## Primrose FE



This brochure is for general informational purposes and is to be used as a guide only. Changes may be made during the development process and floorplans, dimensions, fixtures, fittings, finishes and specifications are subject to change without notice. Window placement, balcony configuration, wardrobe sizes and living areas may vary slightly within each plan type. EQUAL HOUSING OPPORTUNITY

