



# Rose II

HOMES FROM  
**\$520,990**

CLASSIC SERIES

## HUNTERS RIDGE

1005 NORCROSS COURT, CROWLEY, TX 76036

**3,557**  
SQUARE FEET

**4**  
BEDROOMS

**3.5**  
BATHROOMS

**2**  
CAR GARAGE



**ELEVATION A**



**ELEVATION AS**

ELEVATION AS



**ELEVATION B**

ELEVATION B



**ELEVATION C**

ELEVATION C



**ELEVATION D**

ELEVATION D





# Rose II

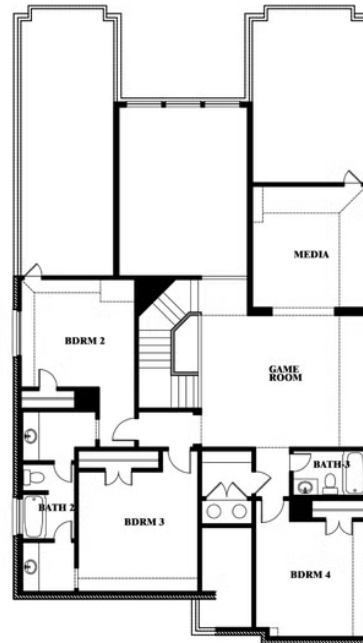
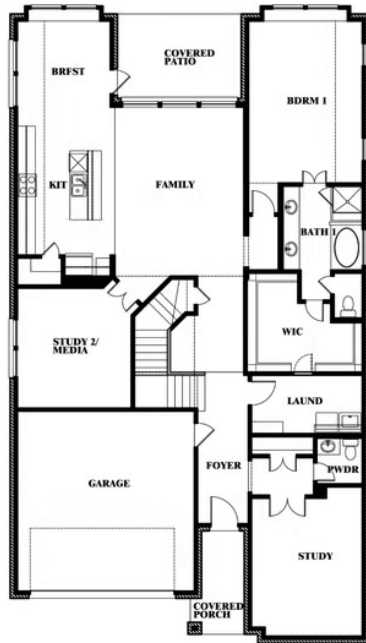
**ROSE II FLOOR PLAN**

## HUNTERS RIDGE

1005 NORCROSS COURT, CROWLEY, TX 76036



## Rose II



This brochure is for general informational purposes and is to be used as a guide only. Changes may be made during the development process and floorplans, dimensions, fixtures, fittings, finishes and specifications are subject to change without notice. Window placement, balcony configuration, wardrobe sizes and living areas may vary slightly within each plan type. EQUAL HOUSING OPPORTUNITY





# Rose II

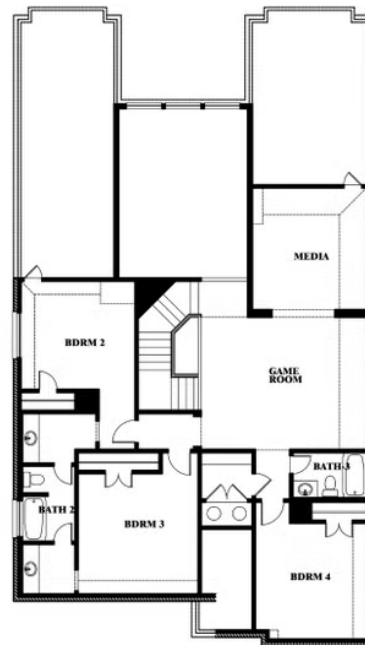
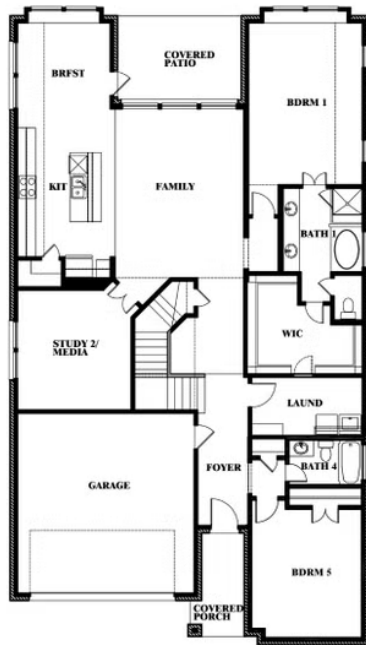
## HUNTERS RIDGE

1005 NORCROSS COURT, CROWLEY, TX 76036

**ROSE II FLOOR PLAN WITH OPTIONAL BED & BATH AT STUDY**



### Rose II Opt. Bed & Bath at Study



This brochure is for general informational purposes and is to be used as a guide only. Changes may be made during the development process and floorplans, dimensions, fixtures, fittings, finishes and specifications are subject to change without notice. Window placement, balcony configuration, wardrobe sizes and living areas may vary slightly within each plan type. EQUAL HOUSING OPPORTUNITY

