



Willow II

ELEMENTS SERIES

EAST OAK CREEK

112 SWEETWATER DRIVE, COMMERCE, TX 75428

HOMES FROM

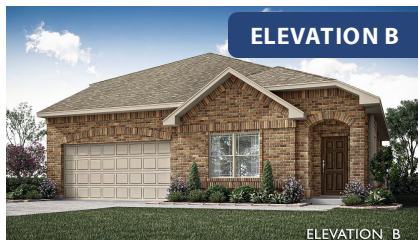
\$345,990

2,483
SQUARE FEET

4
BEDROOMS

3.0
BATHROOMS

2
CAR GARAGE





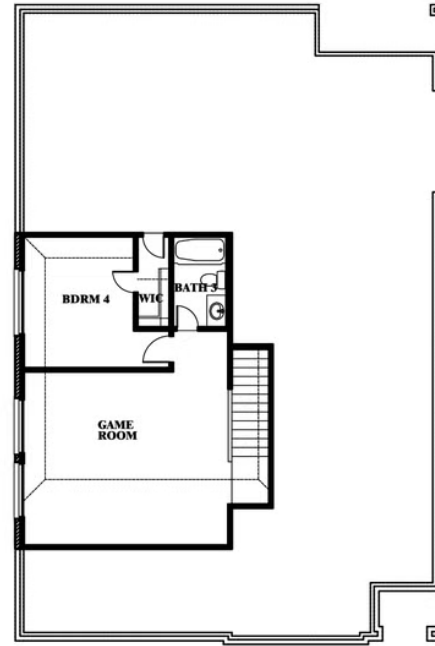
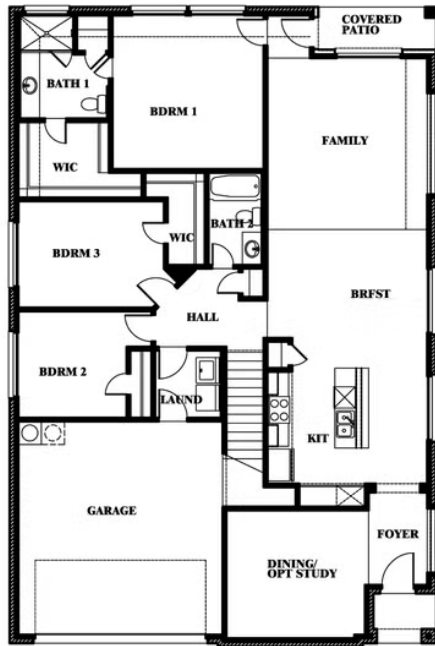
Willow II

EAST OAK CREEK

112 SWEETWATER DRIVE, COMMERCE, TX 75428



Willow II



SECOND FLOOR PLAN

This brochure is for general informational purposes and is to be used as a guide only. Changes may be made during the development process and floorplans, dimensions, fixtures, fittings, finishes and specifications are subject to change without notice. Window placement, balcony configuration, wardrobe sizes and living areas may vary slightly within each plan type. EQUAL HOUSING OPPORTUNITY

EQUAL HOUSING OPPORTUNITY

