



Violet III

HOMES FROM

\$394,990 - \$414,990

CLASSIC SERIES

EAST OAK CREEK

112 SWEETWATER DRIVE, COMMERCE, TX 75428

2,628
SQUARE FEET

4
BEDROOMS

3.5
BATHROOMS

2
CAR GARAGE



ELEVATION A



ELEVATION AS

ELEVATION AS



ELEVATION B

ELEVATION B



ELEVATION C

ELEVATION C



ELEVATION D

ELEVATION D





Violet III

VIOLET III FLOOR PLAN

EAST OAK CREEK

112 SWEETWATER DRIVE, COMMERCE, TX 75428



Violet III



This brochure is for general informational purposes and is to be used as a guide only. Changes may be made during the development process and floorplans, dimensions, fixtures, fittings, finishes and specifications are subject to change without notice. Window placement, balcony configuration, wardrobe sizes and living areas may vary slightly within each plan type. EQUAL HOUSING OPPORTUNITY





Violet III

EAST OAK CREEK

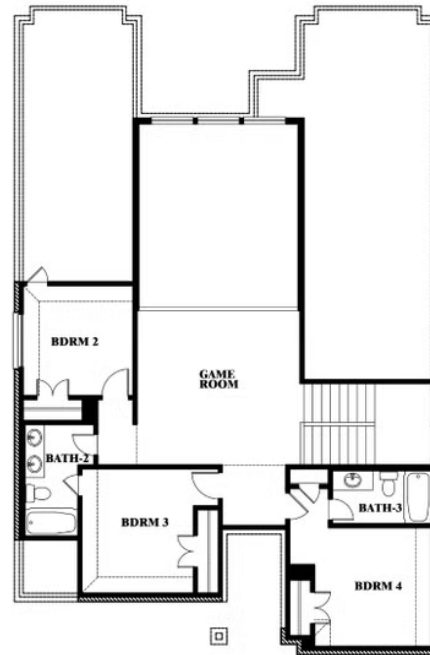
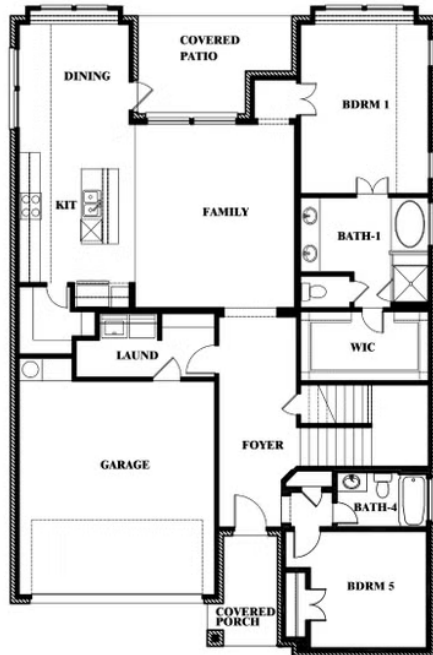
112 SWEETWATER DRIVE, COMMERCE, TX 75428

VIOLET III FLOOR PLAN WITH BEDROOM AT STUDY



Violet III

Opt. Bed 5 & Bath 4 at Study



This brochure is for general informational purposes and is to be used as a guide only. Changes may be made during the development process and floorplans, dimensions, fixtures, fittings, finishes and specifications are subject to change without notice. Window placement, balcony configuration, wardrobe sizes and living areas may vary slightly within each plan type. EQUAL HOUSING OPPORTUNITY

