



# Primrose FE IV

HOMES FROM  
**\$501,990**

CLASSIC SERIES

**EAST OAK CREEK**

112 SWEETWATER DRIVE, COMMERCE, TX 75428

**3,543**  
SQUARE FEET

**3**  
BEDROOMS

**3.5**  
BATHROOMS

**3**  
CAR GARAGE



**ELEVATION A**



**ELEVATION B**



**ELEVATION C**





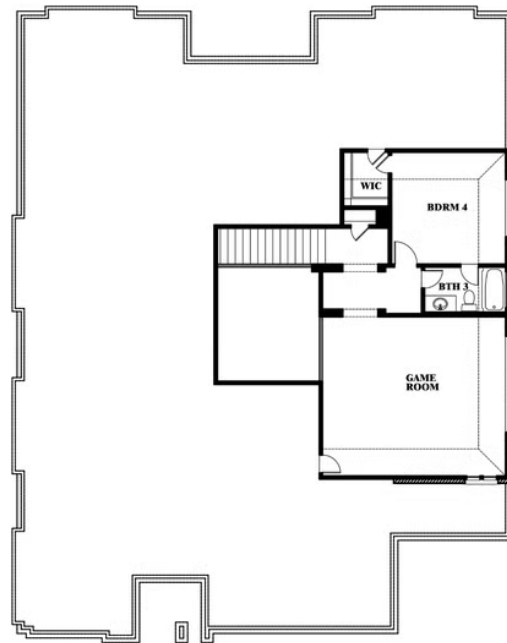
# Primrose FE IV

## EAST OAK CREEK

112 SWEETWATER DRIVE, COMMERCE, TX 75428



## Primrose FE IV



This brochure is for general informational purposes and is to be used as a guide only. Changes may be made during the development process and floorplans, dimensions, fixtures, fittings, finishes and specifications are subject to change without notice. Window placement, balcony configuration, wardrobe sizes and living areas may vary slightly within each plan type. EQUAL HOUSING OPPORTUNITY

