



116 Sweetwater Drive

COMMERCE, TX 75428

EAST OAK CREEK
DOGWOOD III FLOOR PLAN

2333
SQUARE FEET

4
BEDROOMS

3.0
BATHROOMS

3
CAR GARAGE





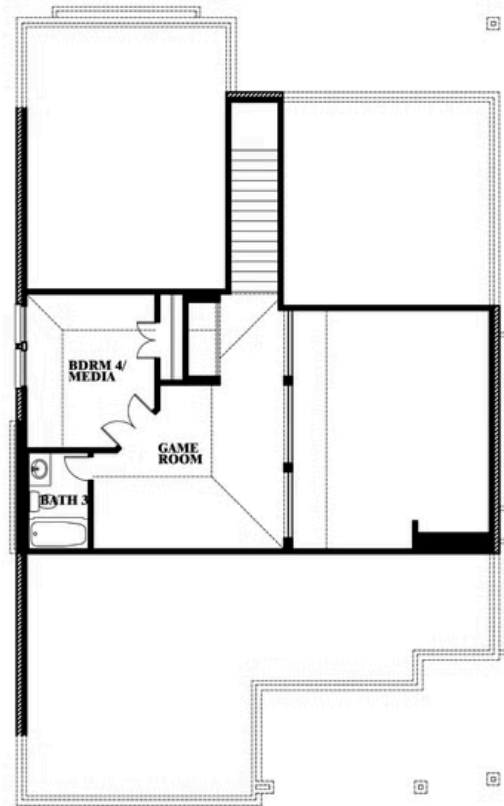
116 Sweetwater Drive

COMMERCE, TX 75428

DOGWOOD III FLOOR PLAN



Dogwood III



This brochure is for general informational purposes and is to be used as a guide only. Changes may be made during the development process and floorplans, dimensions, fixtures, fittings, finishes and specifications are subject to change without notice. Window placement, balcony configuration, wardrobe sizes and living areas may vary slightly within each plan type. EQUAL HOUSING OPPORTUNITY

