



Hawthorne

CLASSIC SERIES

EAST OAK CREEK

112 SWEETWATER DRIVE, COMMERCE, TX 75428

HOMES FROM

\$351,990 - \$368,990

2,235
SQUARE FEET

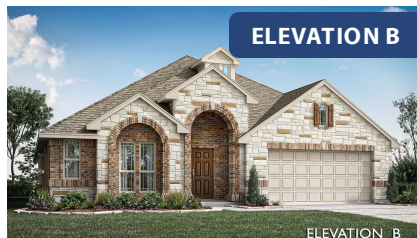
4
BEDROOMS

2.0
BATHROOMS

2
CAR GARAGE

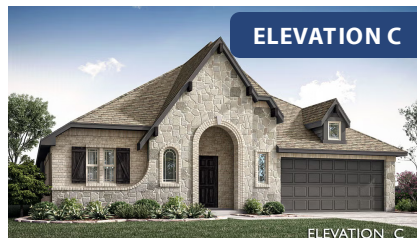


ELEVATION A



ELEVATION B

ELEVATION B



ELEVATION C

ELEVATION C





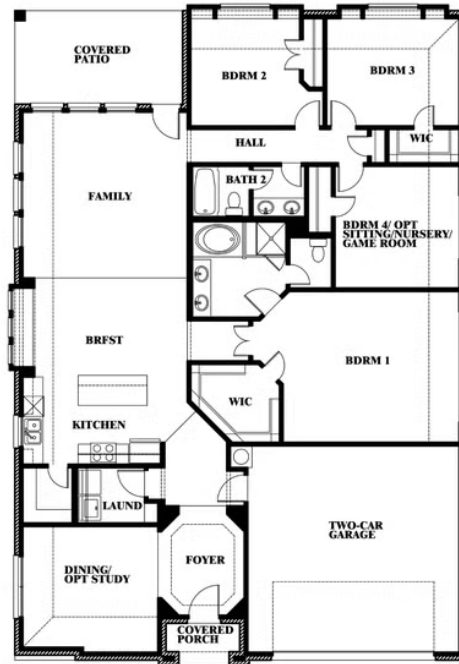
Hawthorne

EAST OAK CREEK

112 SWEETWATER DRIVE, COMMERCE, TX 75428



Hawthorne



This brochure is for general informational purposes and is to be used as a guide only. Changes may be made during the development process and floorplans, dimensions, fixtures, fittings, finishes and specifications are subject to change without notice. Window placement, balcony configuration, wardrobe sizes and living areas may vary slightly within each plan type. EQUAL HOUSING OPPORTUNITY





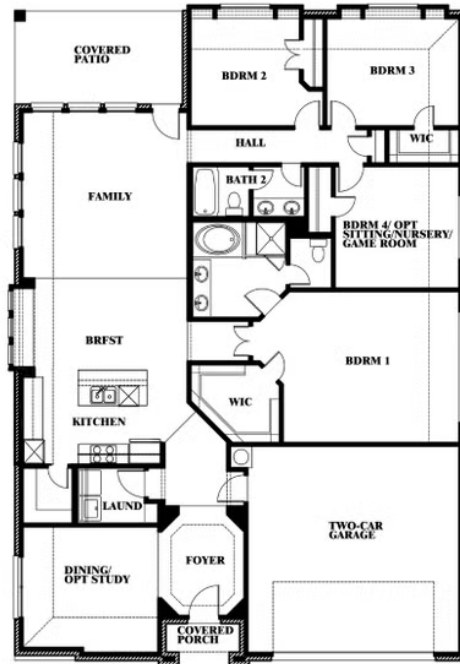
Hawthorne

EAST OAK CREEK

112 SWEETWATER DRIVE, COMMERCE, TX 75428



Hawthorne Opt. Deluxe Kitchen



This brochure is for general informational purposes and is to be used as a guide only. Changes may be made during the development process and floorplans, dimensions, fixtures, fittings, finishes and specifications are subject to change without notice. Window placement, balcony configuration, wardrobe sizes and living areas may vary slightly within each plan type. EQUAL HOUSING OPPORTUNITY

